

10 Gems for Great Rehearsals

Gregg Gausline
Assistant Professor of Music
gausline@uga.edu



The University of Georgia

December 16, 2011
Midwest International Band and Orchestra Clinic
Chicago, Illinois

- Rehearsal Environment
- Breathing/Long-tones
- Warm-up
- Tuning
- Chamber Music Program
- Sight Reading
- Concert Cycle Organization
- Conducting Technique
- Effective Programming
- Let it go

Common Chords of Just Intonation

All chords are based on the root "C" which is "0" pitch.

Major minor dim aug

7th Maj7 6th m6

Common Just Intervals

and their adjustments from Equal Temperament

Interval	Minor 2 nd	Major 2 nd	Minor 3 rd	Major 3 rd	Perfect 4 th	Aug 4 th	Dim 5th
Cents from ET	+ 12	+ 4	+ 16	- 14	- 2	+ 17	- 17

Interval	Perfect 5 th	Minor 6 th	Major 6 th	Minor 7 th	Major 7 th	Dom. 7th	Unison
Cents from ET	+ 2	+ 14	- 16	+ 18	- 12	- 31	+/- 0

Chamber Music Program

Schedule

Monday-Flute Ensemble (1:30-2:00) Clarinet Ensemble (2:00-2:30)
Tuesday-Saxophone Ensemble (1:30-2:00) Woodwind Trio (2:00-2:30)
Wednesday-Trumpet Ensemble (1:30-2:00) Horn Ensemble (2:00-2:30)
Thursday-Trombone Ensemble (1:30-2:00) Tuba Quartet (2:00-2:30)
Friday-Brass Quintet and Woodwind Quintet (1:30-2:15)

Repertoire (Medium Easy/Medium)

Flute Quartet

Adagio and Scherzo-Wouters/Voxman
Baroque Album-Bailey
Quartet for Flutes-Butts
Water Music-Handel/Lombardo

Clarinet Quartet

American Sketch-McKay
March Militaire-Schubert/Halferty
Three Beethoven Classics-arr. Gee
Woodland Sketches-MacDowell/Johnson

Saxophone Quartet

Allerseelen-Strauss/Johnson
Two Bach Chorales-arr. Fote
Fanfare, Air, and Finale-Frackenpohl
Golliogg's Cake Walk-Debussy/Holcombe

Woodwind Trio (flexible instrumentation)

Chamber Music for Three Woodwinds-Voxman
Stephen Foster Suite-arr. Hall
Twelve Trios for Woodwinds-Schaeffer
Water Music Suite-Handel/Holcombe

Trumpet Quartet

American Panorama-McKay
Andante Cantabile-Tchaikovsky/Holmes
Three Renaissance Dances-Susato/Decker
March Militaire-Schubert/Lotzenhiser

Horn Quartet

Aeolian Suite-Ostransky
American Panorama-McKay
Jesu, Joy of Man's Desiring-Bach/Thurston
Quartet Repertoire for Horn-various arrangers

Trombone Quartet

March of a Marionette-Gounod/Lotzenhiser
Suite for Trombones-Butts
Pilgrim Ode-Johnson
The Liberty Bell-Sousa/Benson

Tuba Quartet

Three Madrigals-arr. Pardus
Jesu, Joy of Man's Desiring-Bach/Thurston
National Songs of America-arr. Uber
Suite-Schumann/Shoop

Woodwind Quintet

22 Woodwind Quintets-Andraud
Allegretto-Schubert/Holmes
Three Sea Sketches-McKay
Menuetto-Haydn/Holmes

Brass Quintet

Aria and Minuet-Scarlati/Johnson
Canadian Brass Books
Simple Gifts-Halferty
Sonata No. 1-Pezel/King

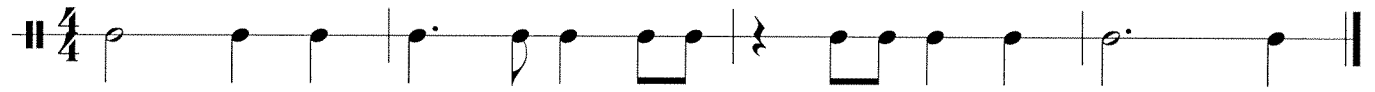
Keyboard Perc. Trio/Quartets

Aria-Diemer/Daughtrey
Chick Corea Children's Songs-Steinquest
Metric Lips-Bela Fleck/Steinquest
Morning Has Broken-Leaman

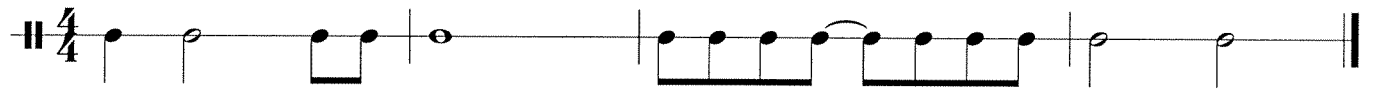
Percussion Ensemble

1812 Overture-arr. Houllif
A Child's Dance-Wren
Fascinating Rhythm-Gershwin/Feldstein
Introduction and March-Whaley

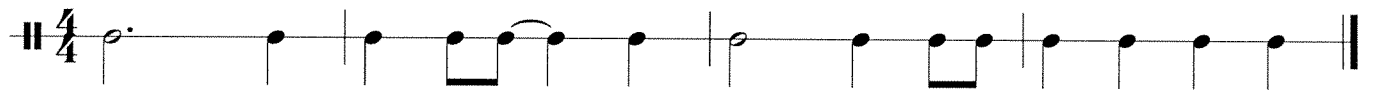
①



②



③



④



Wind Symphony Rehearsal Schedule

Wednesday, Oct. 5

12:20–12:40 Everyone
Read Whitacre
Read Offenbach
12:40-1:00 Stevens
1:00-1:15 Basler
1:15-1:30 Pann
I/Beg. to 15
II/Beg. to rehearsal B
1:35-1:55 Persichetti
Beg. to M
1:55-2:15 Read Bassett

Friday, Oct. 7

No rehearsal
Have a great weekend!

Monday, Oct. 10

12:20-12:40 Basler
Beg. to 125
12:40-1:00 Stevens
Mvt. 1 to 6
1:00-1:25 Pann
I/15 to 41
II/B to B to F
1:30-2:15 Persichetti
I to S

Wednesday, Oct. 12

12:20-12:40 Whitacre
All
12:40-1:00 Offenbach
233 to End/Beg. to 40
1:00-1:25 Pann
I/41 to End
F to End
1:30-1:55 Persichetti
S to End
1:55-2:15 Bassett
Beg. to L

Friday, Oct. 14

12:20-12:45 Stevens
Mvt. 7 to 11
12:45-1:10 Bassett
L to End

***Next performance is Wednesday, November 16**

Debussy Notes

Very nice work overall. Pitch is the most substantial issue. Also, we must maintain interest through intensity from 29 to 41.

Measures

- 3 LOW REEDS (start mp, move into the D more, up to f)
- 2,4, 6 CL I, II, Fl II (more volume)
- 5 LOW REEDS/TU (focus pitch on the C)
- 8 PICC, OB, EH, BSN, CL I (get E's more in tune with the preceding sustain)
- 9 Focus G#
- 7-15 More "ping" on E's from winds to match percussion, but no separation in the winds
- 8-15 Melody balance down to the bassoon
- 8-15 Shape of melody (much more expressive)
 - Taper tie 8/9
 - Move up to mp to the E at 10, then taper
 - Move up to mf to the D# from measures 11 to 13
- 8-15 PERC (a touch more E)
- 14 BSN II, CBCL, BCL, TU, SB, EUPH (clear movement with gentle accent)
- 16 PICC, FL II, CL I (focus concert B)
- 16 Need to move beat 6 across bar-line more into 17
- 17 Balance of B major chord
- 18 Balance B major chord, add G#
- 19 FL I, FL II (bring out the voice shift)
- 17-20 Gradual crescendo, not terraced
- 20 Balance Eb major chord
- 20-23 TPT, HN (start softer and grow more into 23)
- 20-23 Triplets remain strong
- 20-23 TIMP, CHIMES (more sound)
- 24-26 PICC, FL, OB, EH (more front of the pitch, similar to percussion, but still connected)
- 26 HN (more weight and a touch more volume)
- 26 LOW REEDS, BRASS (focus pitch on the C and B natural)
- 27 Steady time, do not slow down
- 28 LOW BRASS, LOW REEDS (molto rit. must broaden)