

Chord and Scale Chart

B♭maj7 B♭7 B♭m7 B♭ Blues Scale



This block shows the first row of the chart. It contains four measures of music. The first measure is a B-flat major 7 chord (B♭maj7) with a treble clef and a key signature of two flats. The second measure is a B-flat 7 chord (B♭7). The third measure is a B-flat minor 7 chord (B♭m7). The fourth measure is the B-flat blues scale (B♭ Blues Scale), which starts on B-flat and includes the notes B-flat, C, D-flat, E-flat, F, G, A-flat, and B-flat.

5 E♭maj7 E♭7 E♭m7 E♭ Blues Scale



This block shows the second row of the chart, starting at measure 5. It contains four measures of music. The first measure is an E-flat major 7 chord (E♭maj7). The second measure is an E-flat 7 chord (E♭7). The third measure is an E-flat minor 7 chord (E♭m7). The fourth measure is the E-flat blues scale (E♭ Blues Scale), which starts on E-flat and includes the notes E-flat, F, G, A-flat, B-flat, C, D-flat, and E-flat.

9 A♭maj7 A♭7 A♭m7 A♭ Blues Scale




This block shows the third row of the chart, starting at measure 9. It contains four measures of music. The first measure is an A-flat major 7 chord (A♭maj7). The second measure is an A-flat 7 chord (A♭7). The third measure is an A-flat minor 7 chord (A♭m7). The fourth measure is the A-flat blues scale (A♭ Blues Scale), which starts on A-flat and includes the notes A-flat, B, C, D, E-flat, F, G, and A-flat.

13 D♭maj7 D♭7 D♭m7 D♭ Blues Scale



This block shows the fourth row of the chart, starting at measure 13. It contains four measures of music. The first measure is a D-flat major 7 chord (D♭maj7). The second measure is a D-flat 7 chord (D♭7). The third measure is a D-flat minor 7 chord (D♭m7). The fourth measure is the D-flat blues scale (D♭ Blues Scale), which starts on D-flat and includes the notes D-flat, E, F, G, A-flat, B-flat, C, and D-flat.

17 G♭maj7 G♭7 G♭m7 G♭ Blues Scale



This block shows the fifth row of the chart, starting at measure 17. It contains four measures of music. The first measure is a G-flat major 7 chord (G♭maj7). The second measure is a G-flat 7 chord (G♭7). The third measure is a G-flat minor 7 chord (G♭m7). The fourth measure is the G-flat blues scale (G♭ Blues Scale), which starts on G-flat and includes the notes G-flat, A, B, C, D, E-flat, F, and G-flat.

21 Bmaj7 B7 Bm7 B Blues Scale



This block shows the sixth row of the chart, starting at measure 21. It contains four measures of music. The first measure is a B major 7 chord (Bmaj7) with a treble clef and a key signature of two sharps. The second measure is a B 7 chord (B7). The third measure is a B minor 7 chord (Bm7). The fourth measure is the B blues scale (B Blues Scale), which starts on B and includes the notes B, C, D, E, F, G, A, and B.

25 Emaj7 E7 Em7 E Blues Scale



This block shows the seventh row of the chart, starting at measure 25. It contains four measures of music. The first measure is an E major 7 chord (Emaj7). The second measure is an E 7 chord (E7). The third measure is an E minor 7 chord (Em7). The fourth measure is the E blues scale (E Blues Scale), which starts on E and includes the notes E, F, G, A, B, C, D, and E.

29 Amaj7 A7 Am7 A Blues Scale



This block shows the eighth row of the chart, starting at measure 29. It contains four measures of music. The first measure is an A major 7 chord (Amaj7). The second measure is an A 7 chord (A7). The third measure is an A minor 7 chord (Am7). The fourth measure is the A blues scale (A Blues Scale), which starts on A and includes the notes A, B, C, D, E, F, G, and A.

Chord and Scale Chart

33 Dmaj7 D7 Dm7 D Blues Scale

This musical staff shows the D major triad (Dmaj7) in the first measure, the D dominant seventh chord (D7) in the second, and the D minor seventh chord (Dm7) in the third. The D Blues Scale is shown in the fourth measure. The key signature has two sharps (F# and C#).

37 Gmaj7 G7 Gm7 G Blues Scale

This musical staff shows the G major triad (Gmaj7) in the first measure, the G dominant seventh chord (G7) in the second, and the G minor seventh chord (Gm7) in the third. The G Blues Scale is shown in the fourth measure. The key signature has two sharps (F# and C#).

41 Cmaj7 C7 Cm7 C Blues Scale

This musical staff shows the C major triad (Cmaj7) in the first measure, the C dominant seventh chord (C7) in the second, and the C minor seventh chord (Cm7) in the third. The C Blues Scale is shown in the fourth measure. The key signature has one flat (Bb).

45 Fmaj7 F7 Fm7 F Blues Scale

This musical staff shows the F major triad (Fmaj7) in the first measure, the F dominant seventh chord (F7) in the second, and the F minor seventh chord (Fm7) in the third. The F Blues Scale is shown in the fourth measure. The key signature has two flats (Bb and Eb).

Piano

Five Minutes A Day

Andy Clark

Piano

B \flat 6 B \flat 7

Pno.

5 E \flat 7 B \flat 7 A7 A \flat 7 G7

Pno.

9 C \flat m7 F7 B \flat 6 F7

Pno.

13 B \flat 6 B \flat 7

Five Minutes A Day

17 Eb7 Bb7 A7 Ab7 G7

Pno.

21 Cm7 F7 Bb6 F7

Pno.

Blues Vocabulary

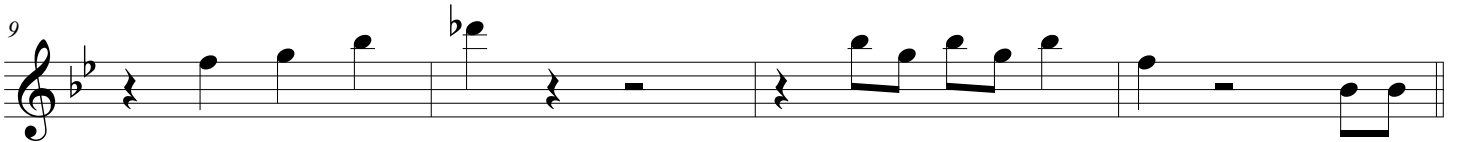
K.C Blues-Parker



Alright, Ok, You Win-Wyche/Watts



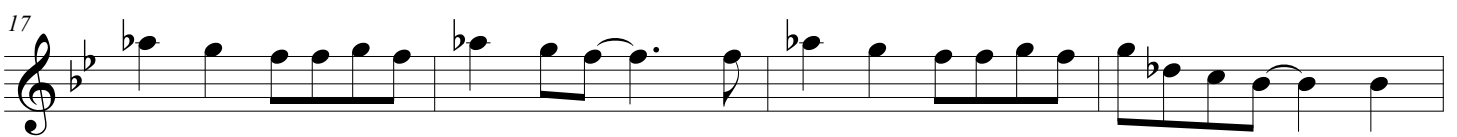
Boom Boom-Lewis



It's A Low Down Dirty Shame



Shake That Thing-Papa Charlie Jackson



Bag's Groove-Milt Jackson



Birk's Works-Dizzy Gillespie



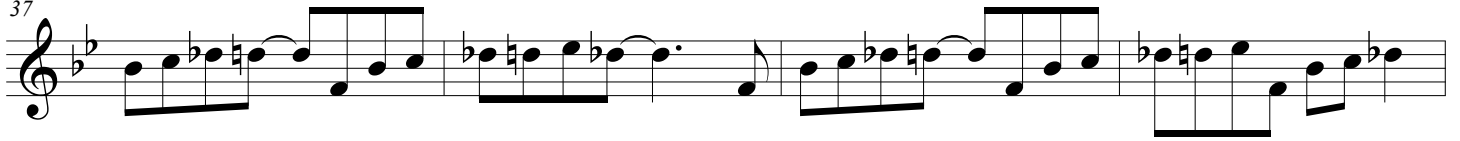
Billie's Bounce-Parker



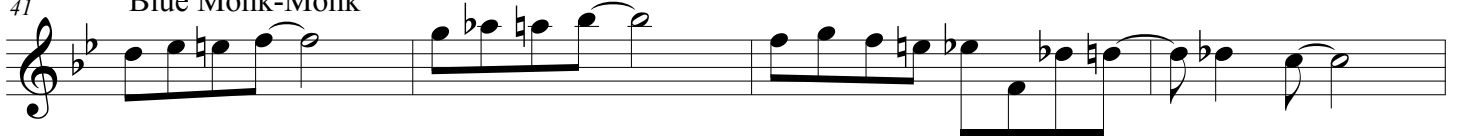
33 Tenor Madness-Sonny Rollins



37 Straight, No Chaser-Monk



41 Blue Monk-Monk



45 Bessie's Blues-Coltrane

