

MAJOR SCALES I


Flute

This image displays eight musical staves, each representing a major scale for the flute. The scales are arranged vertically and labeled on the left as C, F, B \flat , E \flat , A \flat , D \flat , G \flat , and C \flat . Each staff begins with a treble clef and a key signature signature (no sharps or flats for C, one flat for F, two flats for B \flat , three flats for E \flat , four flats for A \flat , five flats for D \flat , six flats for G \flat , and seven flats for C \flat). The notes of each scale are written as quarter notes, ascending from the bottom line of the staff to the top line. The C scale starts on middle C (C4) and ends on C5. The F scale starts on F3 and ends on F4. The B \flat scale starts on B \flat 3 and ends on B \flat 4. The E \flat scale starts on E \flat 3 and ends on E \flat 4. The A \flat scale starts on A \flat 3 and ends on A \flat 4. The D \flat scale starts on D \flat 3 and ends on D \flat 4. The G \flat scale starts on G \flat 3 and ends on G \flat 4. The C \flat scale starts on C \flat 3 and ends on C \flat 4. Each staff concludes with a double bar line.

MAJOR SCALES II


Flute

G



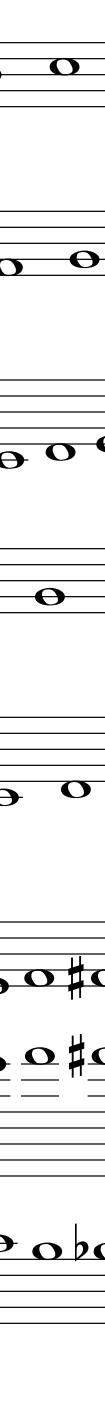
A single musical staff in treble clef with one sharp (F#). The scale is written as a sequence of eight quarter notes: G, A, B, C, D, E, F#, G.

D



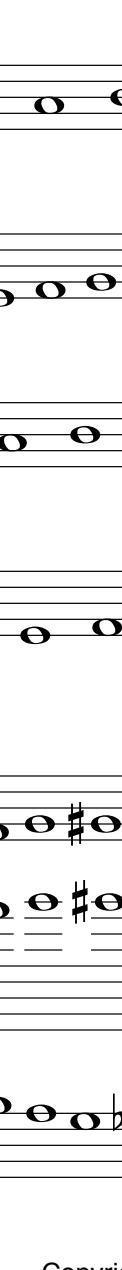
A single musical staff in treble clef with two sharps (F#, C#). The scale is written as a sequence of eight quarter notes: D, E, F#, G, A, B, C#, D.

A




A single musical staff in treble clef with three sharps (F#, C#, G#). The scale is written as a sequence of eight quarter notes: A, B, C#, D, E, F#, G#, A.

E




A single musical staff in treble clef with four sharps (F#, C#, G#, D#). The scale is written as a sequence of eight quarter notes: E, F#, G#, A, B, C#, D#, E.

B




A single musical staff in treble clef with five sharps (F#, C#, G#, D#, A#). The scale is written as a sequence of eight quarter notes: B, C#, D#, E, F#, G#, A#, B.

F#




A single musical staff in treble clef with six sharps (F#, C#, G#, D#, A#, E#). The scale is written as a sequence of eight quarter notes: F#, G#, A#, B, C#, D#, E#, F#.

C#



A single musical staff in treble clef with seven sharps (F#, C#, G#, D#, A#, E#, B#). The scale is written as a sequence of eight quarter notes: C#, D#, E#, F#, G#, A#, B#, C#.

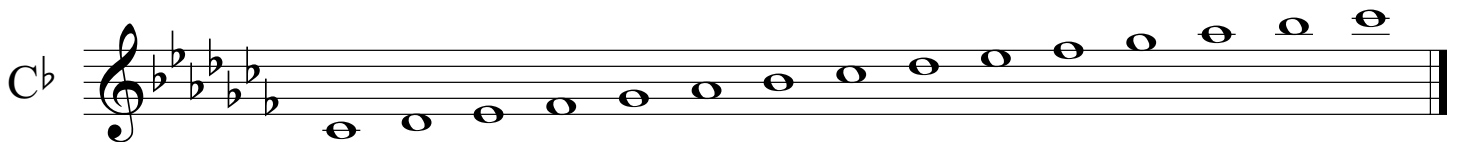
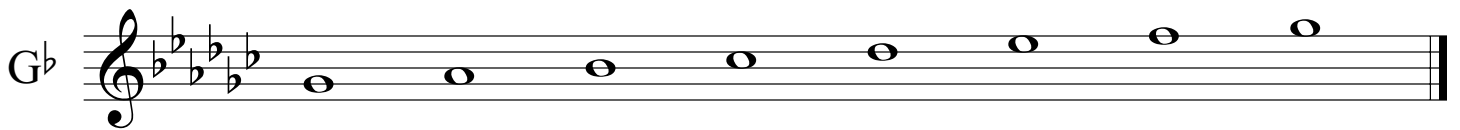
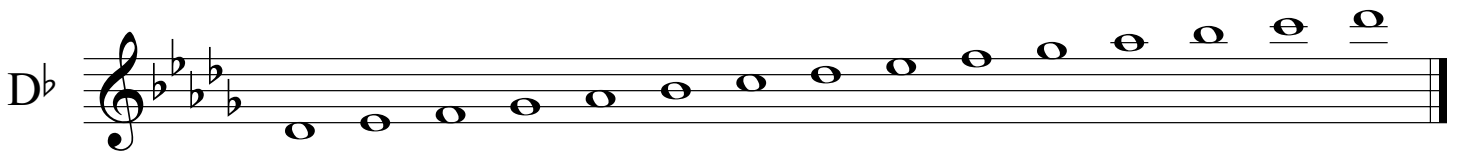
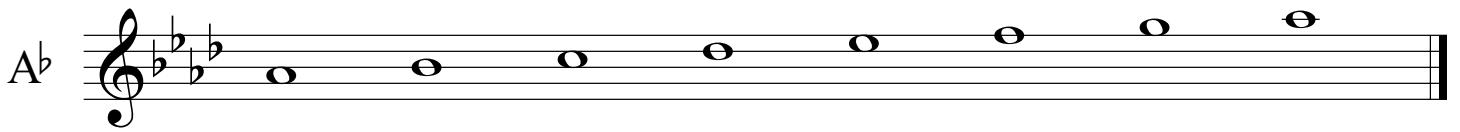
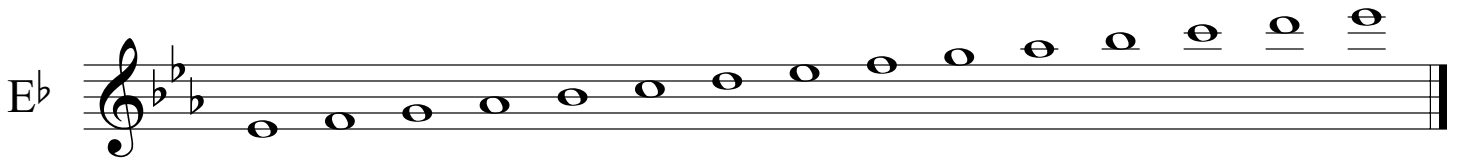
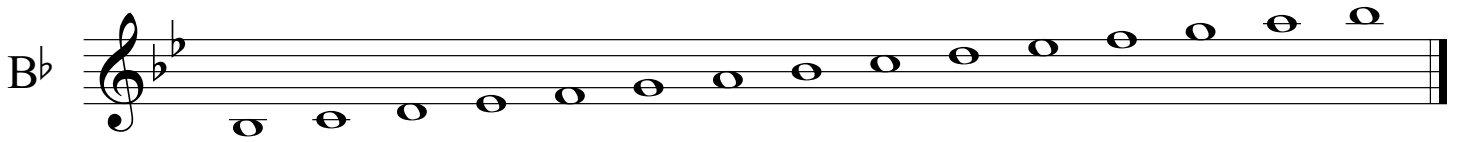
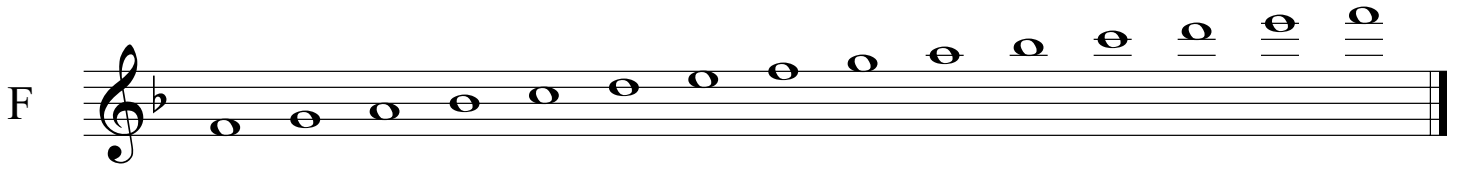
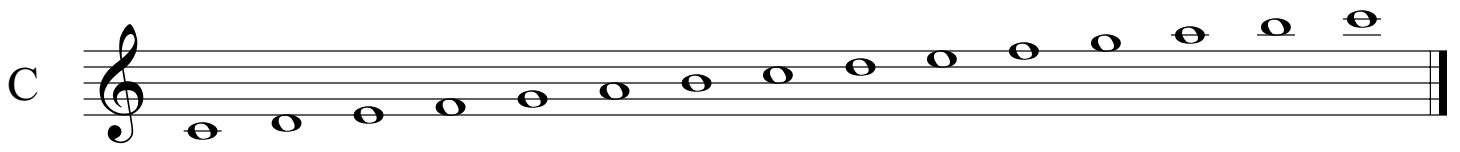
Chromatic



Three musical staves in treble clef showing a chromatic scale. The first staff contains the ascending sequence of notes from G to G# (G, G#, A, A#, B, B#, C, C#, D, D#, E, E#, F, F#, G). The second staff contains the descending sequence of notes from G to G# (G, F#, F, E#, E, D#, D, C#, C, B#, B#, A, A#, G). The third staff contains the descending sequence of notes from G to G# (G, F, F#, E, E#, D, D#, C, C#, B, B#, A, A#, G).

MAJOR SCALES I

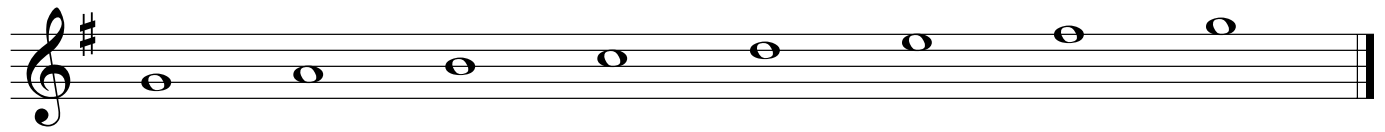
Oboe



MAJOR SCALES II

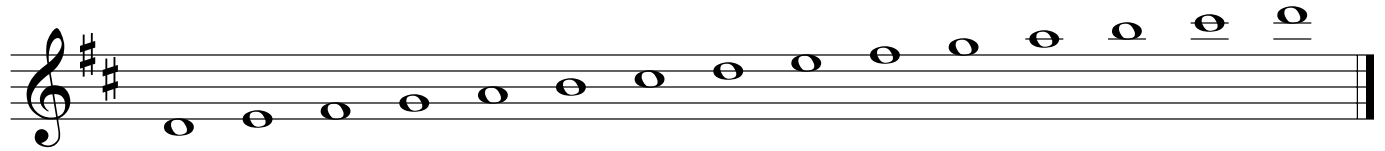
Oboe

G



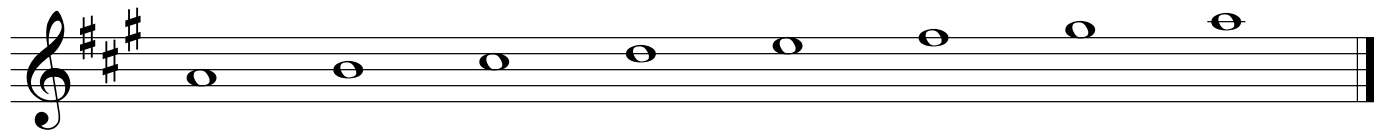
A musical staff in treble clef with one sharp (F#) in the key signature. The scale consists of eight quarter notes: G, A, B, C, D, E, F#, and G.

D



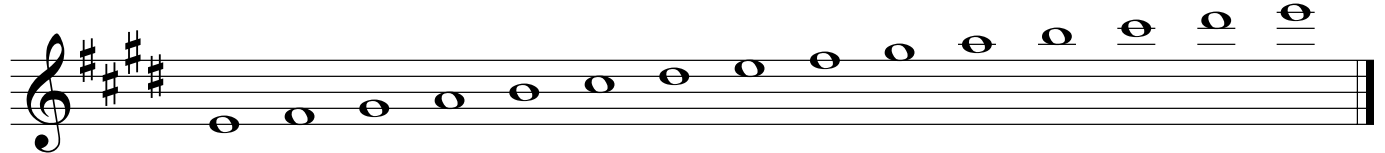
A musical staff in treble clef with two sharps (F# and C#) in the key signature. The scale consists of nine quarter notes: D, E, F#, G, A, B, C#, D.

A



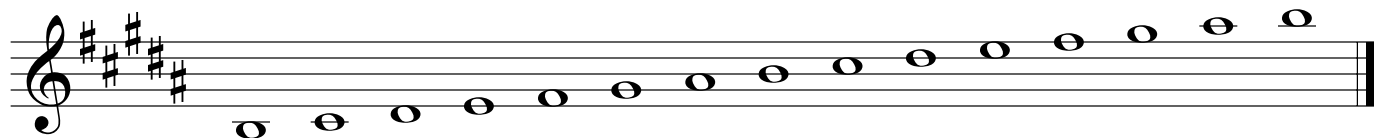
A musical staff in treble clef with three sharps (F#, C#, and G#) in the key signature. The scale consists of eight quarter notes: A, B, C#, D, E, F#, G#, and A.

E



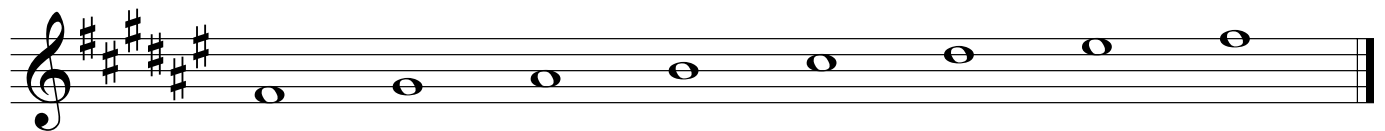
A musical staff in treble clef with four sharps (F#, C#, G#, and D#) in the key signature. The scale consists of nine quarter notes: E, F#, G#, A, B, C#, D#, E.

B



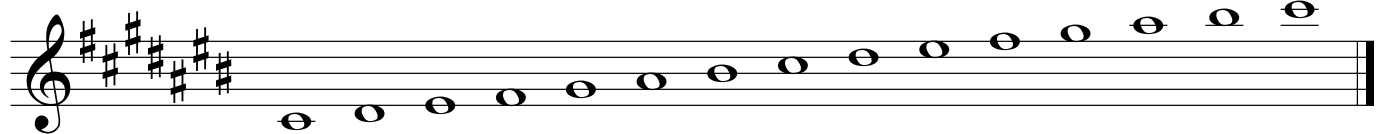
A musical staff in treble clef with five sharps (F#, C#, G#, D#, and A#) in the key signature. The scale consists of nine quarter notes: B, C#, D#, E, F#, G#, A#, B.

F#




A musical staff in treble clef with six sharps (F#, C#, G#, D#, A#, and E#) in the key signature. The scale consists of eight quarter notes: F#, G#, A, B, C, D, E, and F#.

C#

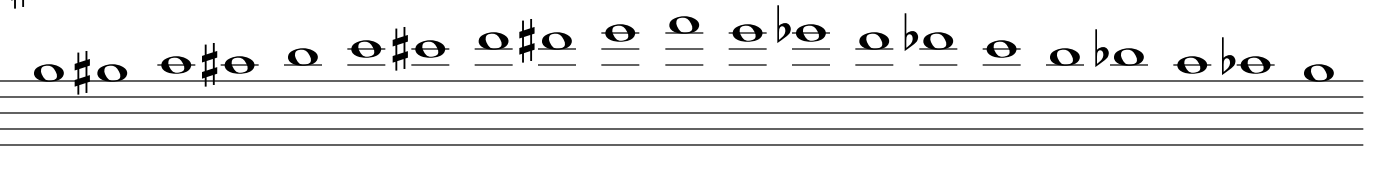


A musical staff in treble clef with seven sharps (F#, C#, G#, D#, A#, E#, and B#) in the key signature. The scale consists of nine quarter notes: C#, D, E, F#, G, A, B, C#, and C#.

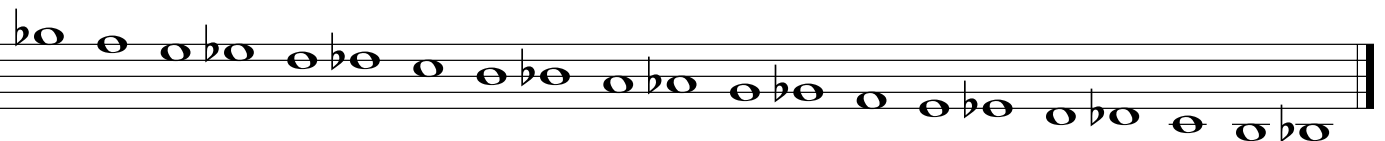
Chromatic



A musical staff in treble clef showing a chromatic scale ascending from G to G#. The notes are: G, G#, A, A#, B, B#, C, C#, D, D#, E, E#, F, F#, G.



A musical staff in treble clef showing a chromatic scale descending from G to F. The notes are: G, F#, F, E#, E, D#, D, C#, C, B#, B, A, A#, A, G.

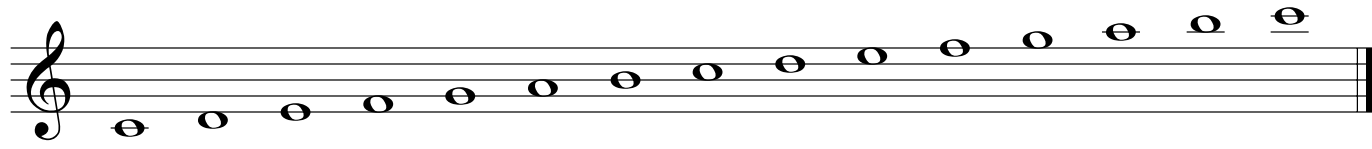


A musical staff in treble clef showing a chromatic scale descending from G to F. The notes are: G, Gb, F#, F, E#, E, D#, D, C#, C, B#, B, Ab, A, G.

MAJOR SCALES I

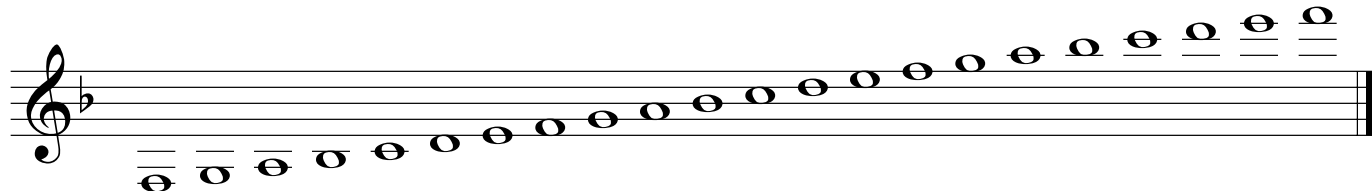
Clarinet

C



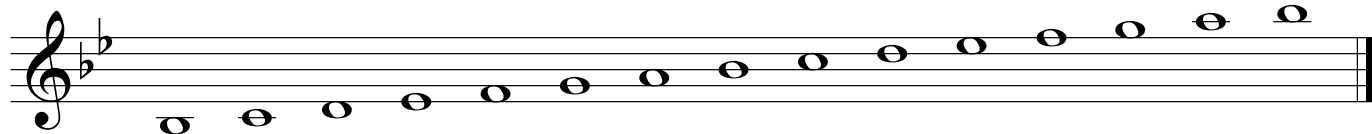
A musical staff in treble clef showing the C major scale. The notes are C, D, E, F, G, A, B, and C, ascending from the bottom line to the top line.

F



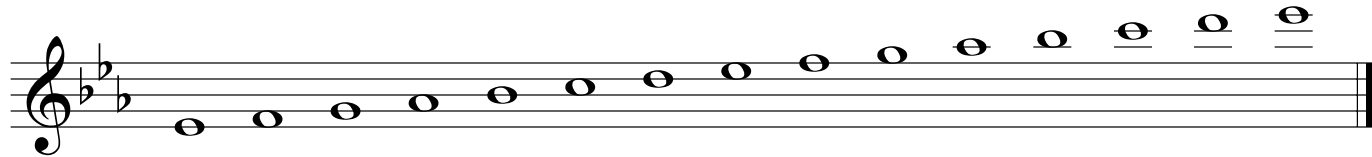
A musical staff in treble clef showing the F major scale. The notes are F, G, A, Bb, C, D, E, and F, ascending from the first space to the top line.

Bb



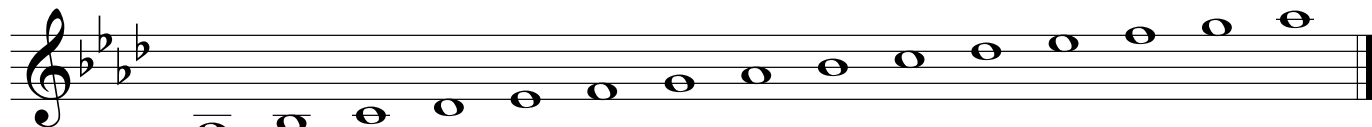
A musical staff in treble clef showing the Bb major scale. The notes are Bb, C, D, E, F, G, A, and Bb, ascending from the first space to the top line.

Eb



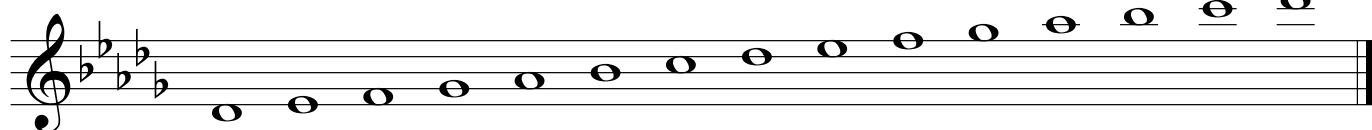
A musical staff in treble clef showing the Eb major scale. The notes are Eb, F, G, Ab, Bb, C, D, and Eb, ascending from the first space to the top line.

Ab



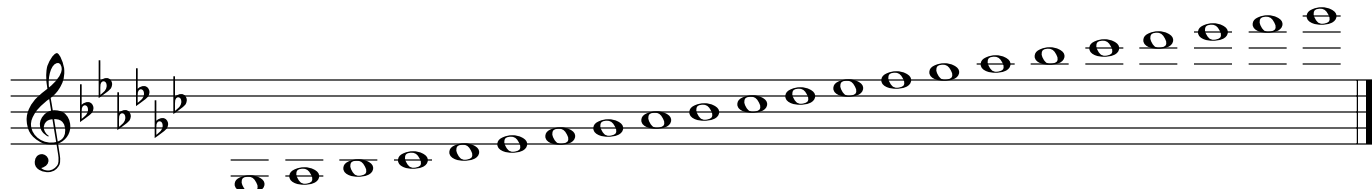
A musical staff in treble clef showing the Ab major scale. The notes are Ab, Bb, C, D, Eb, F, G, and Ab, ascending from the first space to the top line.

Db



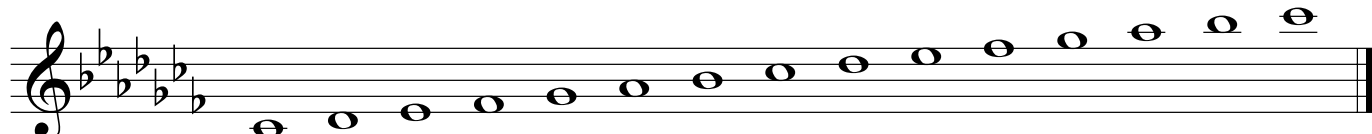
A musical staff in treble clef showing the Db major scale. The notes are Db, Eb, F, G, Ab, Bb, C, and Db, ascending from the first space to the top line.

Gb



A musical staff in treble clef showing the Gb major scale. The notes are Gb, Ab, Bb, C, Db, Eb, F, and Gb, ascending from the first space to the top line.

Cb

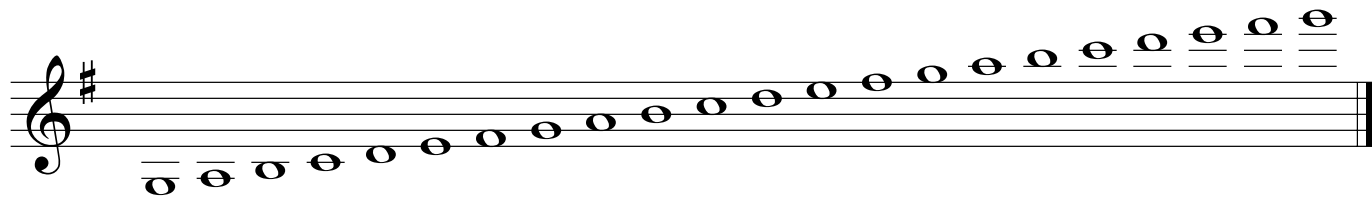


A musical staff in treble clef showing the Cb major scale. The notes are Cb, Db, Eb, F, Gb, Ab, Bb, and Cb, ascending from the first space to the top line.

MAJOR SCALES II

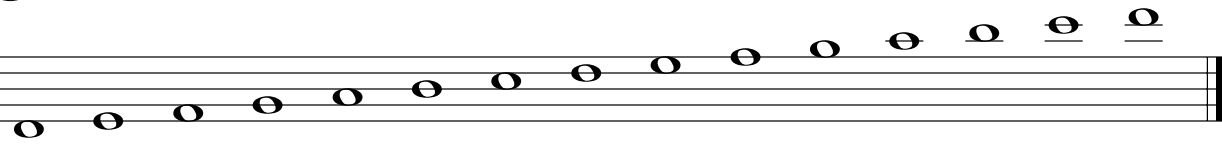
Clarinet

G



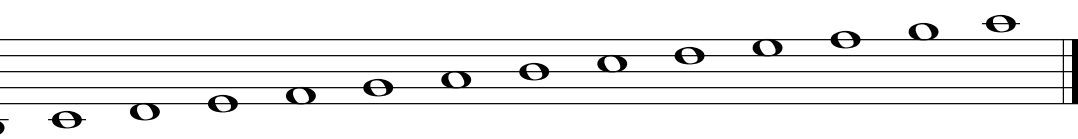
A musical staff in treble clef with one sharp (F#) in the key signature. The scale is written as a sequence of whole notes, starting on G4 and ascending to G5. The notes are: G, A, B, C, D, E, F#, G, A, B, C, D, E, F#, G.

D



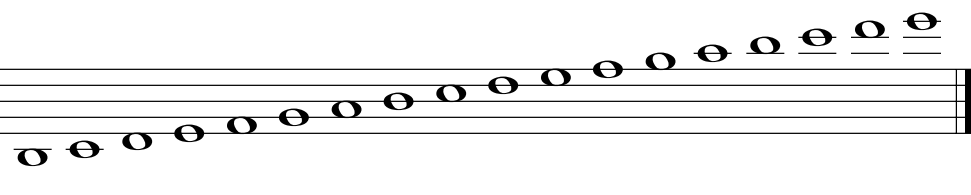
A musical staff in treble clef with two sharps (F#, C#) in the key signature. The scale is written as a sequence of whole notes, starting on D4 and ascending to D5. The notes are: D, E, F#, G, A, B, C#, D, E, F#, G, A, B, C#, D.

A



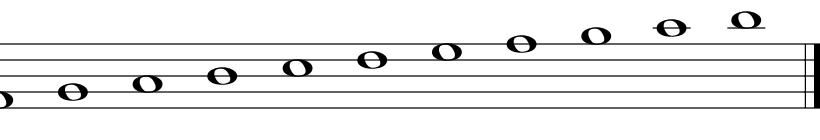
A musical staff in treble clef with three sharps (F#, C#, G#) in the key signature. The scale is written as a sequence of whole notes, starting on A3 and ascending to A4. The notes are: A, B, C#, D, E, F#, G#, A, B, C#, D, E, F#, G#, A.

E



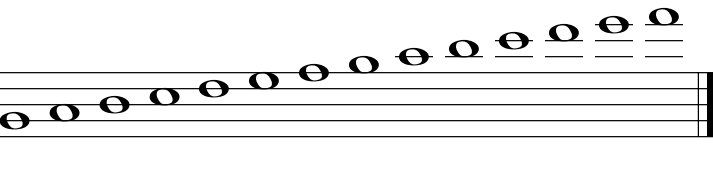
A musical staff in treble clef with four sharps (F#, C#, G#, D#) in the key signature. The scale is written as a sequence of whole notes, starting on E3 and ascending to E4. The notes are: E, F#, G#, A, B, C#, D#, E, F#, G#, A, B, C#, D#, E.

B



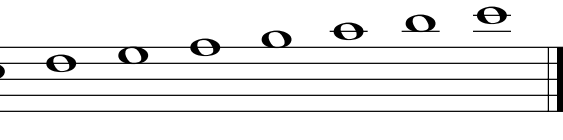
A musical staff in treble clef with five sharps (F#, C#, G#, D#, A#) in the key signature. The scale is written as a sequence of whole notes, starting on B2 and ascending to B3. The notes are: B, C#, D#, E, F#, G#, A#, B, C#, D#, E, F#, G#, A#, B.

F#



A musical staff in treble clef with six sharps (F#, C#, G#, D#, A#, E#) in the key signature. The scale is written as a sequence of whole notes, starting on F#3 and ascending to F#4. The notes are: F#, G#, A#, B, C#, D#, E#, F#, G#, A#, B, C#, D#, E#, F#.

C#



A musical staff in treble clef with seven sharps (F#, C#, G#, D#, A#, E#, B#) in the key signature. The scale is written as a sequence of whole notes, starting on C#3 and ascending to C#4. The notes are: C#, D#, E#, F#, G#, A#, B#, C#, D#, E#, F#, G#, A#, B#, C#.

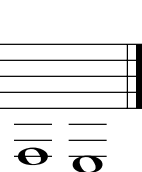
Chromatic



A musical staff in treble clef showing a chromatic scale ascending from C4 to C5. The notes are: C, C#, D, D#, E, E#, F, F#, G, G#, A, A#, B, B#, C.



A musical staff in treble clef showing a chromatic scale descending from C5 to C4. The notes are: C, B, Bb, Ab, G, Gb, F, Fb, E, Eb, D, Db, C.



A musical staff in treble clef showing a chromatic scale descending from C5 to C4. The notes are: C, B, Bb, Ab, G, Gb, F, Fb, E, Eb, D, Db, C.

MAJOR SCALES I


Bass Clarinet

The image displays eight musical staves, each representing a major scale for the Bass Clarinet. The scales are arranged vertically from top to bottom: C, F, B \flat , E \flat , A \flat , D \flat , G \flat , and C \flat . Each staff begins with a treble clef and a key signature signature (flats for F, B \flat , E \flat , A \flat , D \flat , G \flat , and C \flat). The notes are written as quarter notes, ascending from the tonic to the octave. The C scale is the only one without accidentals. The F scale has one flat (B \flat). The B \flat scale has two flats (B \flat , E \flat). The E \flat scale has three flats (B \flat , E \flat , A \flat). The A \flat scale has four flats (B \flat , E \flat , A \flat , D \flat). The D \flat scale has five flats (B \flat , E \flat , A \flat , D \flat , G \flat). The G \flat scale has six flats (B \flat , E \flat , A \flat , D \flat , G \flat , C \flat). The C \flat scale has seven flats (B \flat , E \flat , A \flat , D \flat , G \flat , C \flat , F \flat). Each staff ends with a double bar line.

MAJOR SCALES II


Bass Clarinet

G




A musical staff in treble clef with one sharp (F#) in the key signature. It contains the G major scale: G, A, B, C, D, E, F#, G, ascending and descending.

D



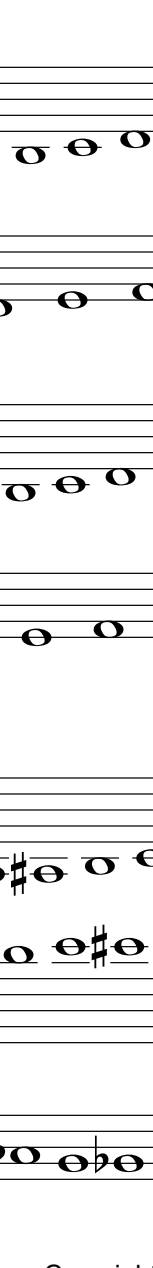
A musical staff in treble clef with two sharps (F#, C#) in the key signature. It contains the D major scale: D, E, F#, G, A, B, C#, D, ascending and descending.

A




A musical staff in treble clef with three sharps (F#, C#, G#) in the key signature. It contains the A major scale: A, B, C#, D, E, F#, G#, A, ascending and descending.

E




A musical staff in treble clef with four sharps (F#, C#, G#, D#) in the key signature. It contains the E major scale: E, F#, G#, A, B, C#, D#, E, ascending and descending.

B



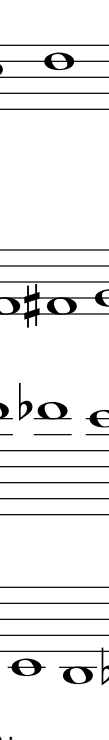
A musical staff in treble clef with five sharps (F#, C#, G#, D#, A#) in the key signature. It contains the B major scale: B, C#, D#, E, F#, G#, A#, B, ascending and descending.

F#



A musical staff in treble clef with six sharps (F#, C#, G#, D#, A#, E#) in the key signature. It contains the F# major scale: F#, G#, A#, B, C#, D#, E#, F#, ascending and descending.

C#



A musical staff in treble clef with seven sharps (F#, C#, G#, D#, A#, E#, B#) in the key signature. It contains the C# major scale: C#, D#, E#, F#, G#, A#, B#, C#, ascending and descending.

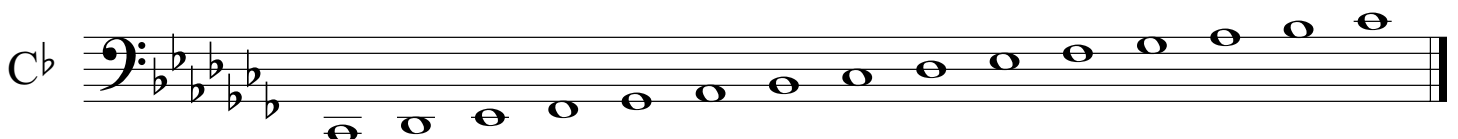
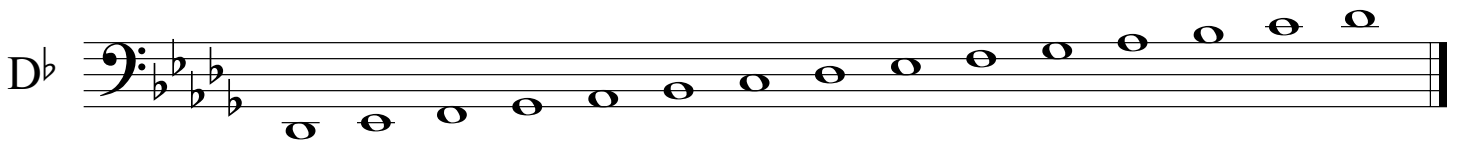
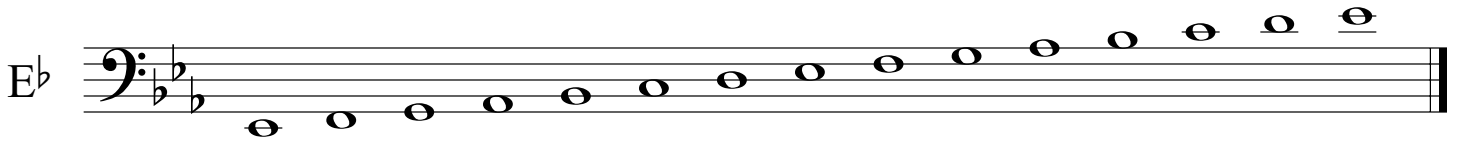
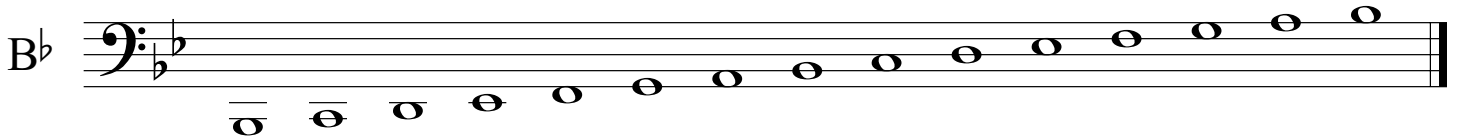
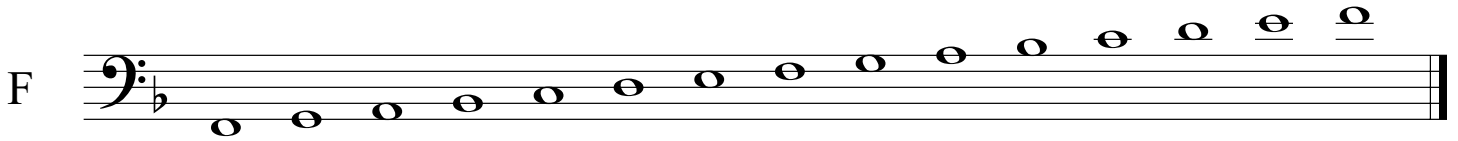
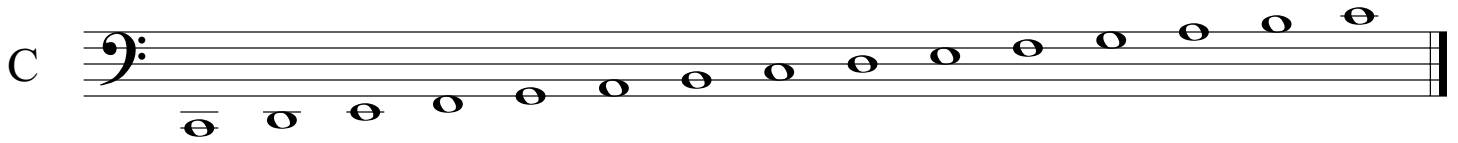
Chromatic



Three musical staves in treble clef showing a chromatic scale. The first staff shows the ascending scale with sharps: C#, D#, E#, F#, G#, A#, B#, C#. The second staff shows the descending scale with sharps: C#, B#, A#, G#, F#, E#, D#, C#. The third staff shows the descending scale with flats: C, Bb, Ab, Gb, Fb, Eb, Db, C.

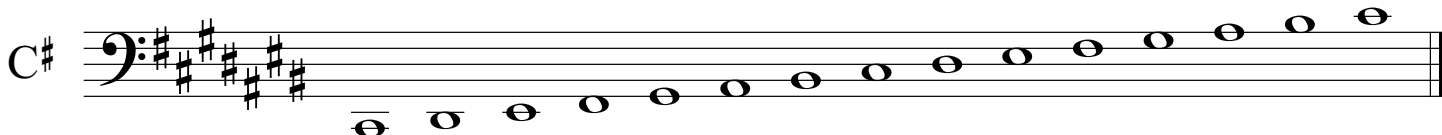
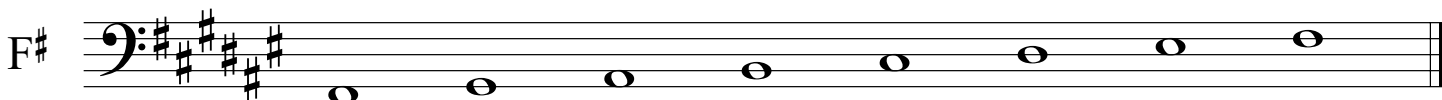
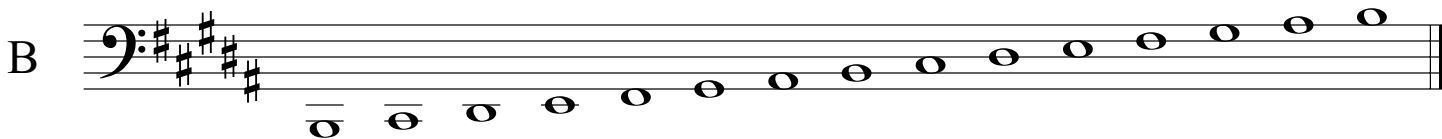
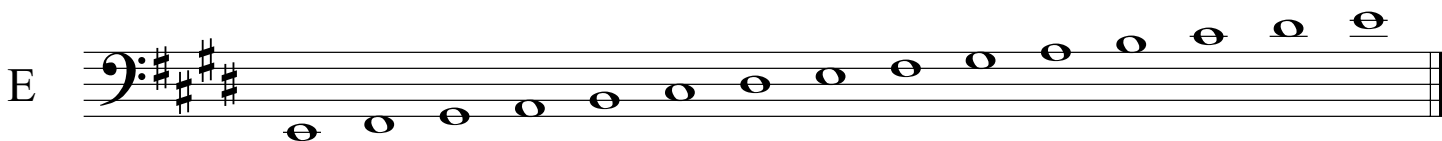
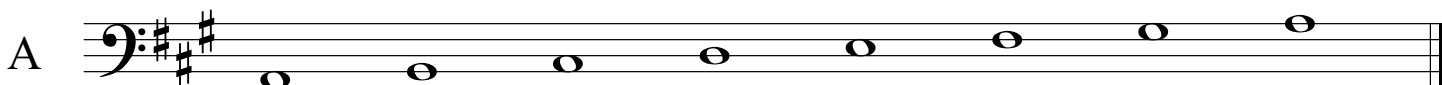
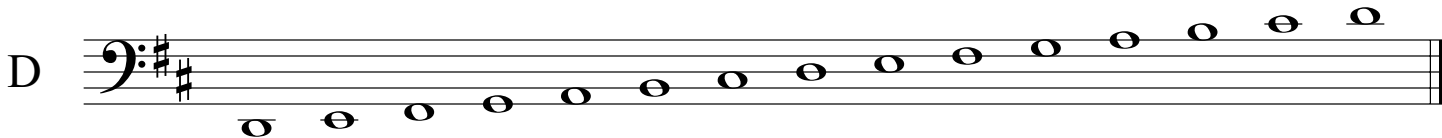
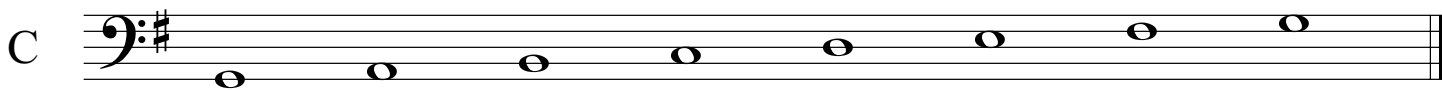
MAJOR SCALES I

Bassoon

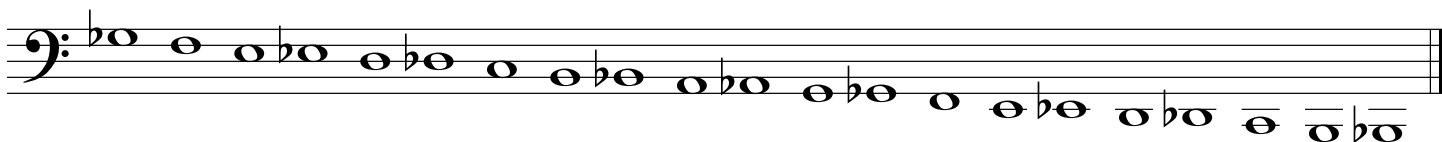
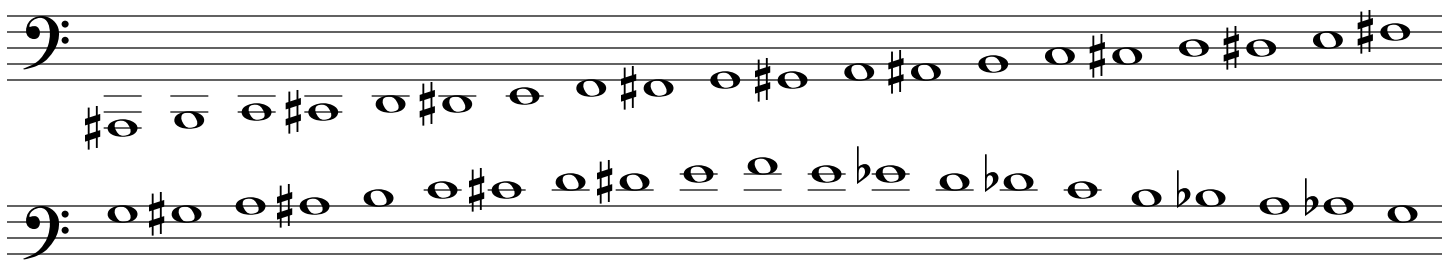


MAJOR SCALES II

Bassoon

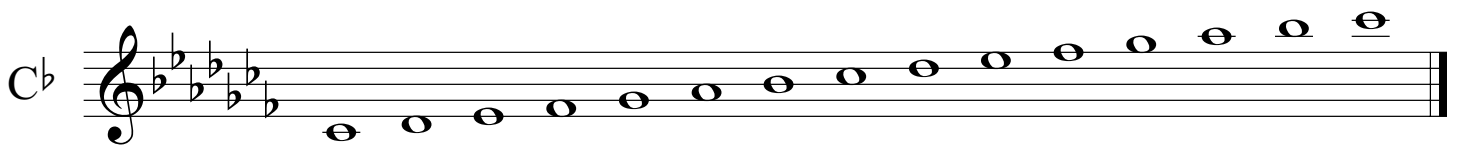
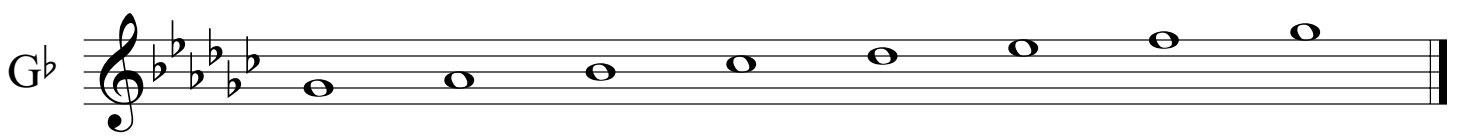
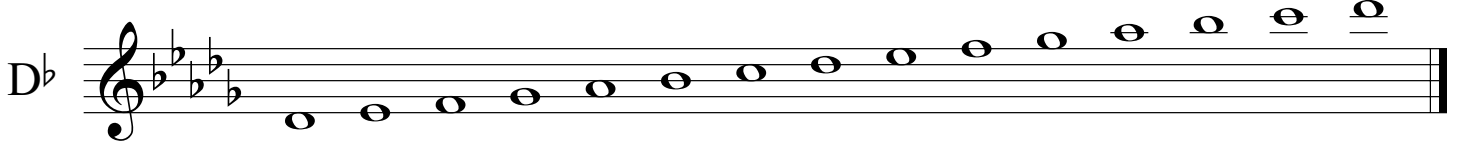
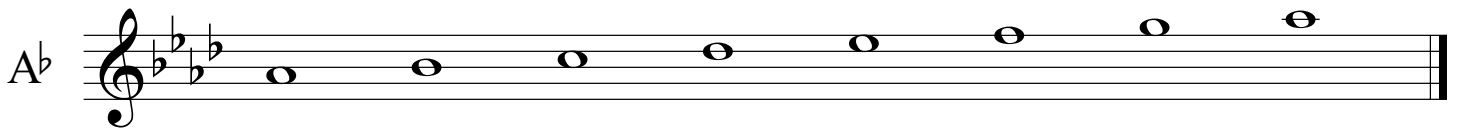
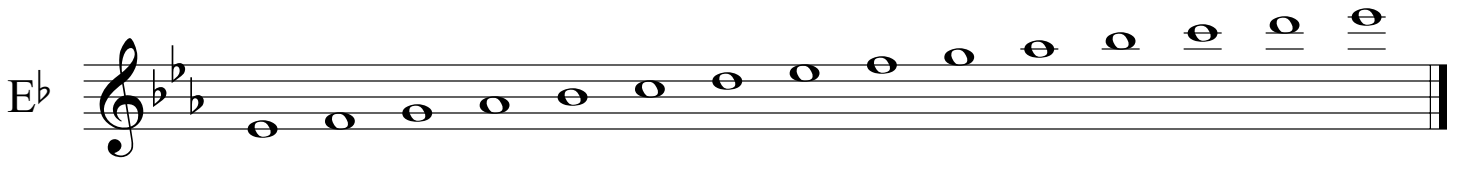
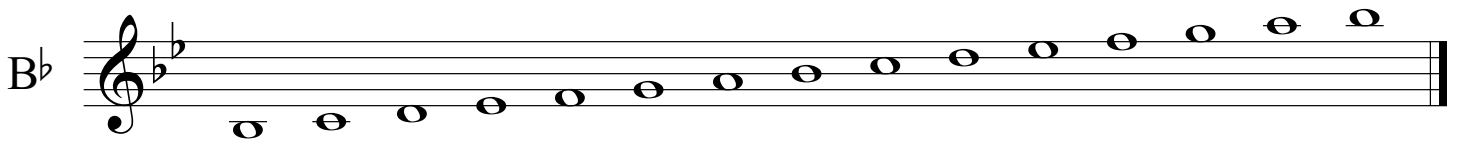
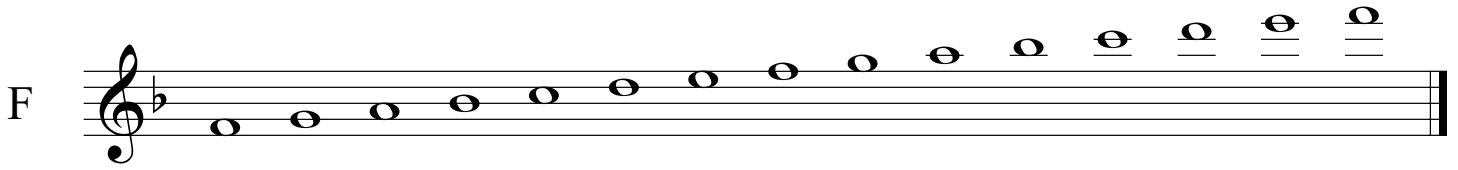
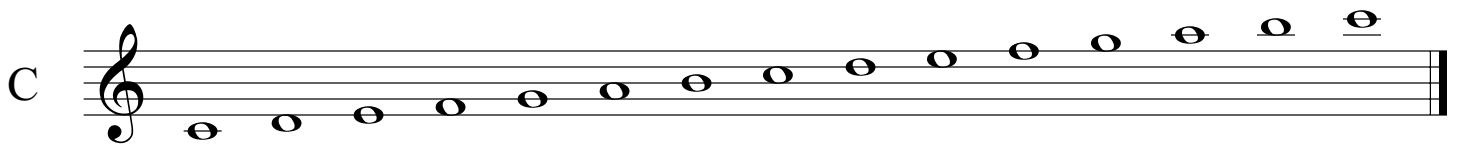


Chromatic



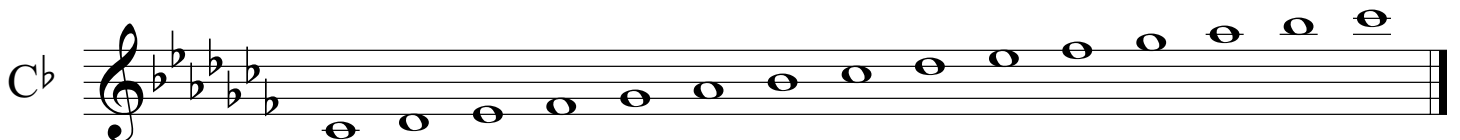
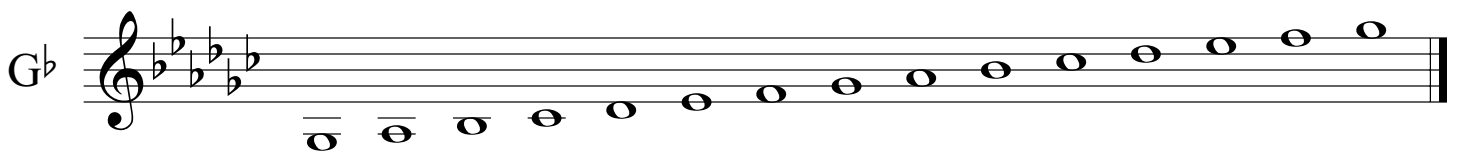
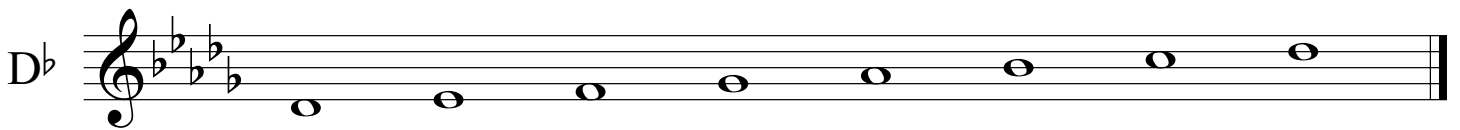
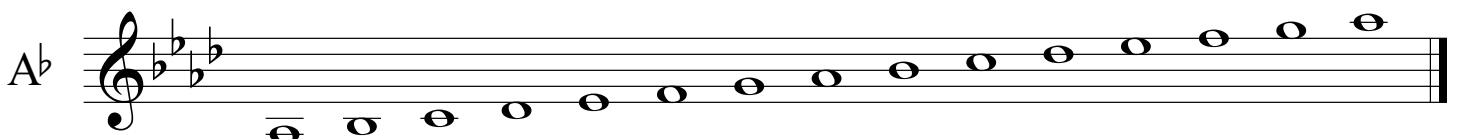
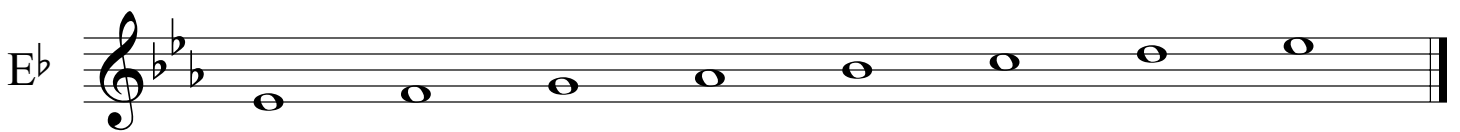
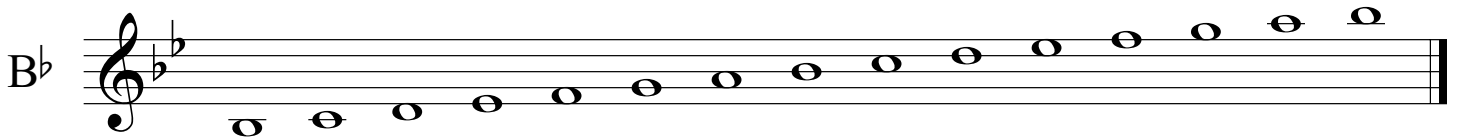
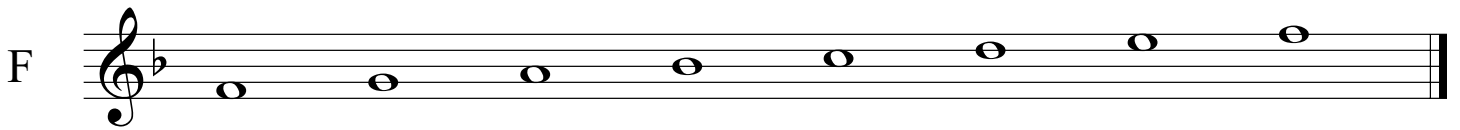
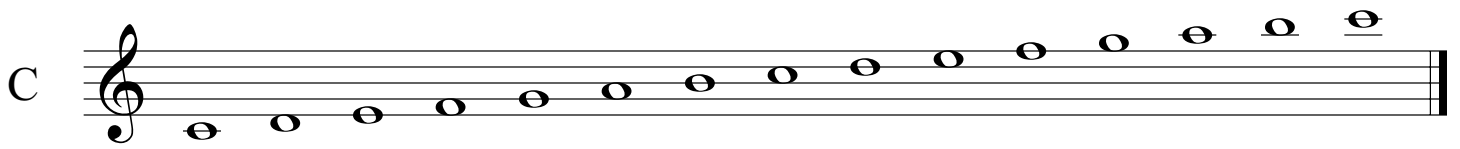
MAJOR SCALES I

Saxophone



MAJOR SCALES I

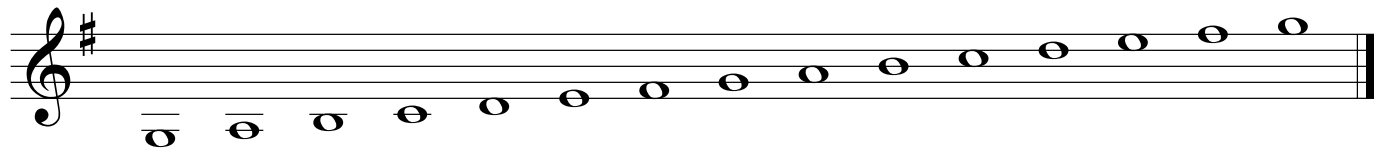
Cornet/Trumpet
Baritone T.C.



MAJOR SCALES II

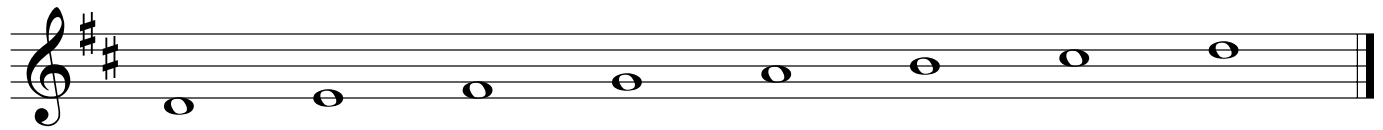
Cornet/Trumpet
Baritone T.C.

G



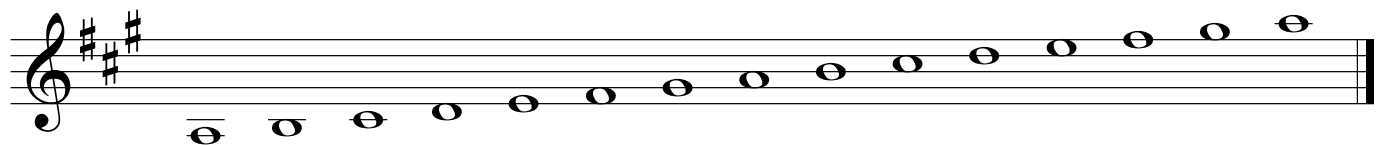
A musical staff in treble clef with one sharp (F#) in the key signature. The scale is written as a sequence of whole notes: G, A, B, C, D, E, F#, G.

D



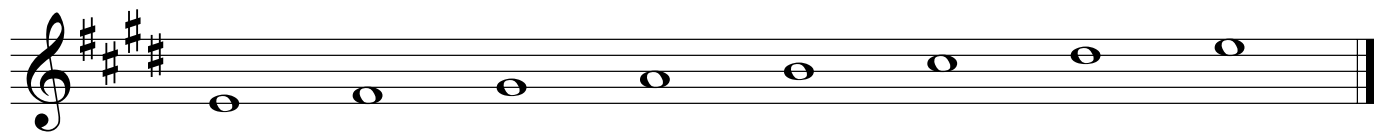
A musical staff in treble clef with two sharps (F#, C#) in the key signature. The scale is written as a sequence of whole notes: D, E, F#, G, A, B, C#, D.

A



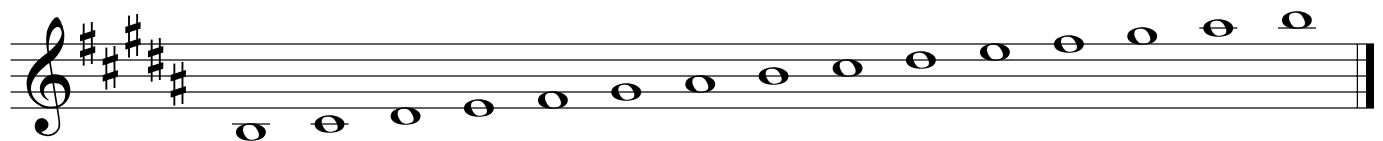
A musical staff in treble clef with three sharps (F#, C#, G#) in the key signature. The scale is written as a sequence of whole notes: A, B, C#, D, E, F#, G#, A.

E



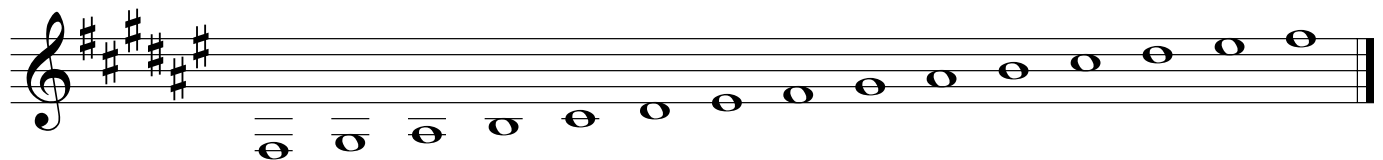
A musical staff in treble clef with four sharps (F#, C#, G#, D#) in the key signature. The scale is written as a sequence of whole notes: E, F#, G#, A, B, C#, D#, E.

B



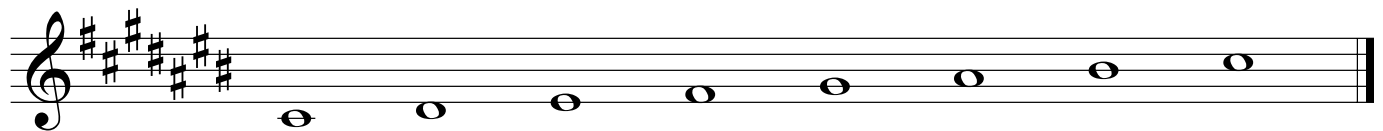
A musical staff in treble clef with five sharps (F#, C#, G#, D#, A#) in the key signature. The scale is written as a sequence of whole notes: B, C#, D#, E, F#, G#, A#, B.

F#



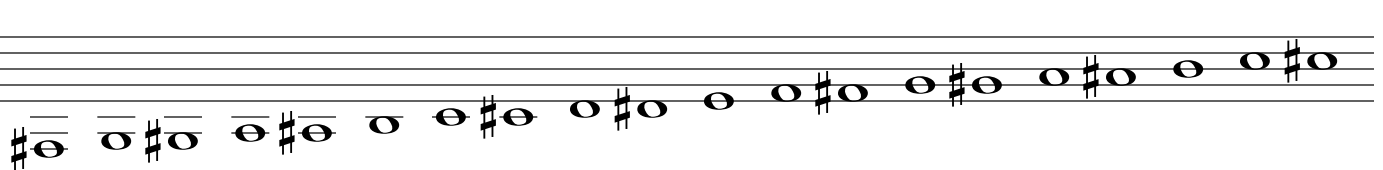
A musical staff in treble clef with six sharps (F#, C#, G#, D#, A#, E#) in the key signature. The scale is written as a sequence of whole notes: F#, G#, A#, B, C#, D#, E#, F#.

C#

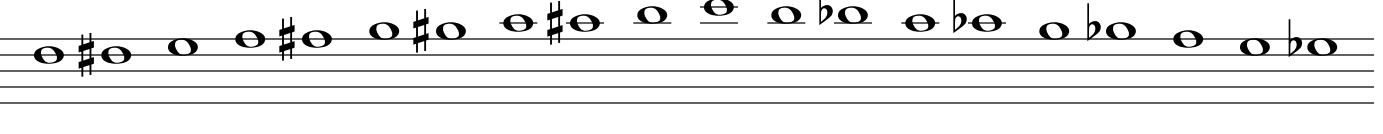


A musical staff in treble clef with seven sharps (F#, C#, G#, D#, A#, E#, B#) in the key signature. The scale is written as a sequence of whole notes: C#, D#, E#, F#, G#, A#, B#, C#.

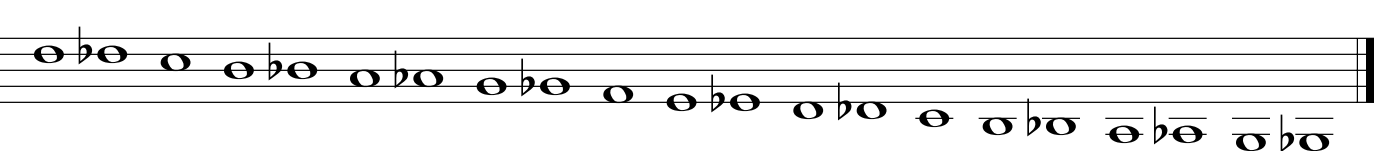
Chromatic



A musical staff in treble clef showing the ascending chromatic scale: C, C#, D, D#, E, E#, F, F#, G, G#, A, A#, B, B#, C.



A musical staff in treble clef showing the descending chromatic scale: C, B, Bb, Ab, G, F, Fb, Eb, D, C, Cb, Bb, Ab, G, F, Fb, Eb, D, C.

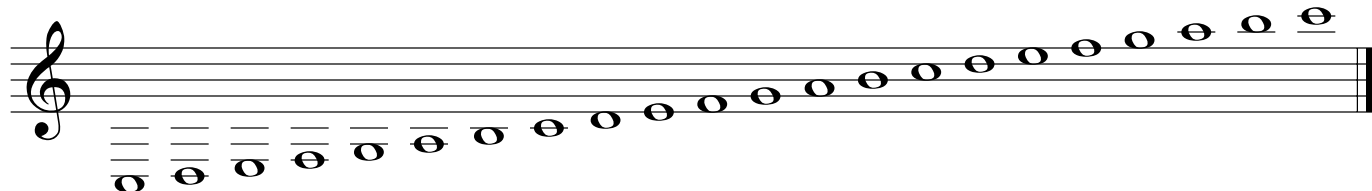


A musical staff in treble clef showing the descending chromatic scale: C, B, Bb, Ab, G, F, Fb, Eb, D, C, Cb, Bb, Ab, G, F, Fb, Eb, D, C.

MAJOR SCALES I

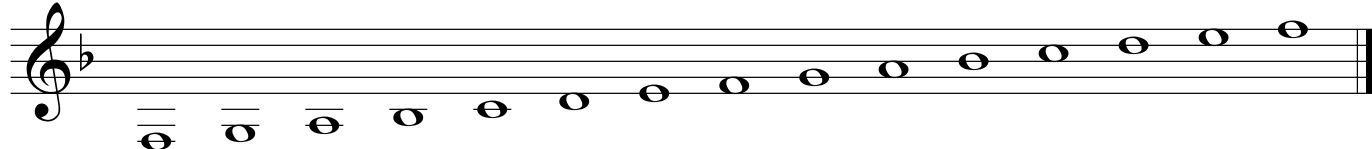
Horn

C



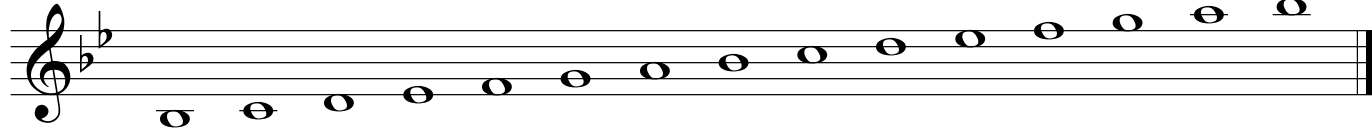
A musical staff in treble clef with a C-clef. The scale is written as a sequence of whole notes: C, D, E, F, G, A, B, C, D, E, F, G, A, B, C. The notes are arranged in a slightly ascending curve across the staff.

F



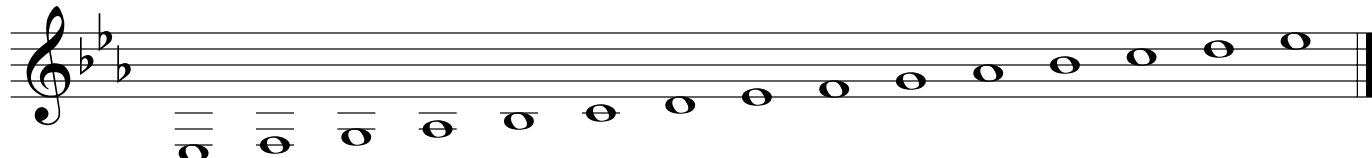
A musical staff in treble clef with an F-clef. The scale is written as a sequence of whole notes: F, G, A, Bb, C, D, E, F, G, A, Bb, C, D, E, F. The notes are arranged in a slightly ascending curve across the staff.

Bb



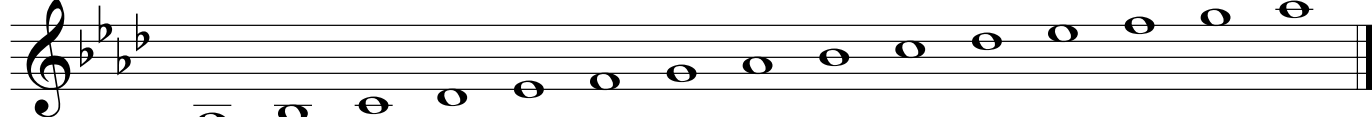
A musical staff in treble clef with a Bb-clef. The scale is written as a sequence of whole notes: Bb, C, D, E, F, G, A, Bb, C, D, E, F, G, A, Bb. The notes are arranged in a slightly ascending curve across the staff.

Eb



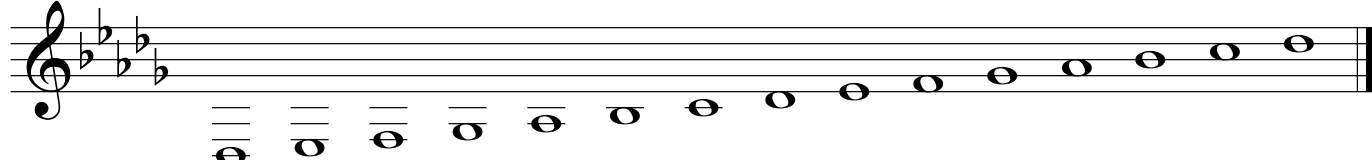
A musical staff in treble clef with an Eb-clef. The scale is written as a sequence of whole notes: Eb, F, G, Ab, Bb, C, D, Eb, F, G, Ab, Bb, C, D, Eb. The notes are arranged in a slightly ascending curve across the staff.

Ab



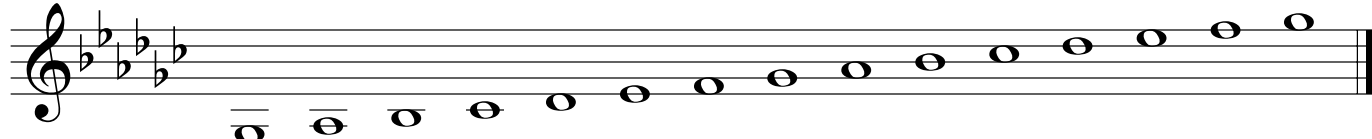
A musical staff in treble clef with an Ab-clef. The scale is written as a sequence of whole notes: Ab, Bb, C, D, Eb, F, G, Ab, Bb, C, D, Eb, F, G, Ab. The notes are arranged in a slightly ascending curve across the staff.

Db



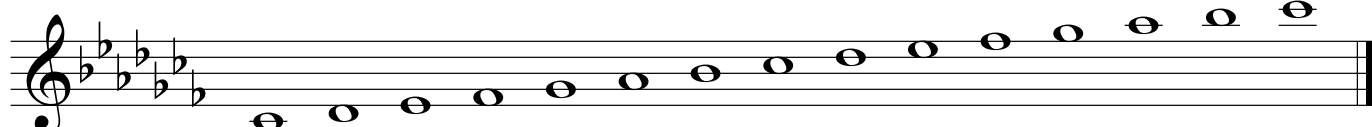
A musical staff in treble clef with a Db-clef. The scale is written as a sequence of whole notes: Db, Eb, F, G, Ab, Bb, C, Db, Eb, F, G, Ab, Bb, C, Db. The notes are arranged in a slightly ascending curve across the staff.

Gb



A musical staff in treble clef with a Gb-clef. The scale is written as a sequence of whole notes: Gb, Ab, Bb, C, Db, Eb, F, Gb, Ab, Bb, C, Db, Eb, F, Gb. The notes are arranged in a slightly ascending curve across the staff.

Cb

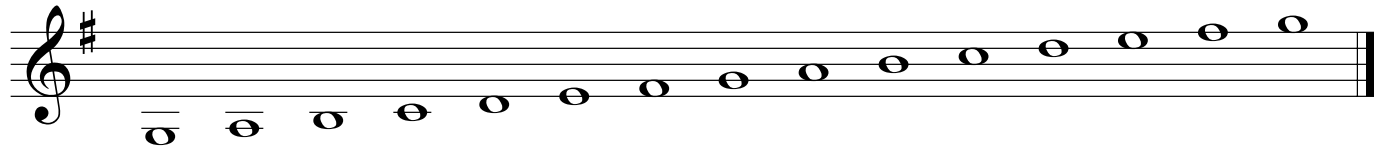


A musical staff in treble clef with a Cb-clef. The scale is written as a sequence of whole notes: Cb, Db, Eb, F, Gb, Ab, Bb, Cb, Db, Eb, F, Gb, Ab, Bb, Cb. The notes are arranged in a slightly ascending curve across the staff.

MAJOR SCALES II

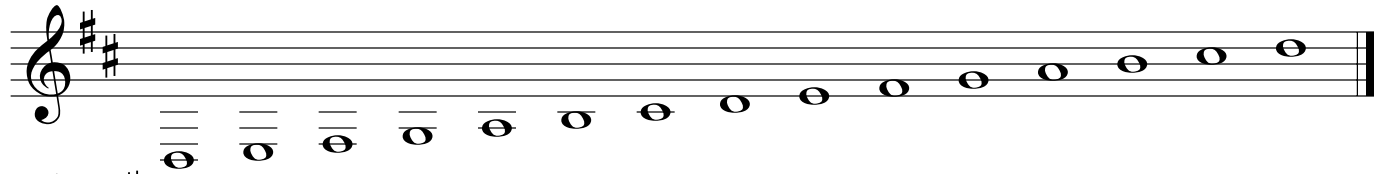
Horn

G



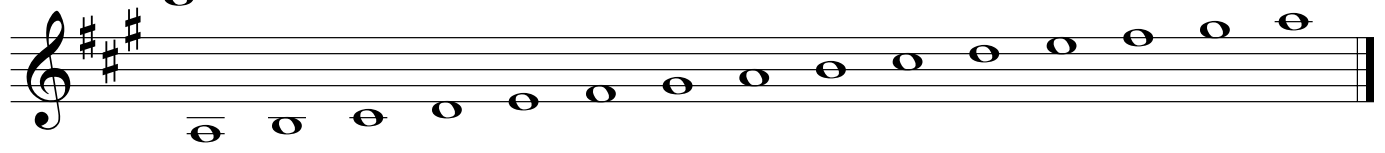
A musical staff in treble clef with one sharp (F#) in the key signature. It contains the G major scale: G, A, B, C, D, E, F#, G, A, B, C, D, E, F#, G.

D



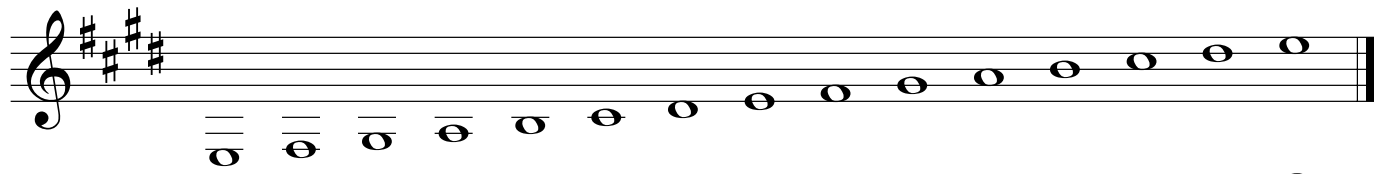
A musical staff in treble clef with two sharps (F#, C#) in the key signature. It contains the D major scale: D, E, F#, G, A, B, C#, D, E, F#, G, A, B, C#, D.

A



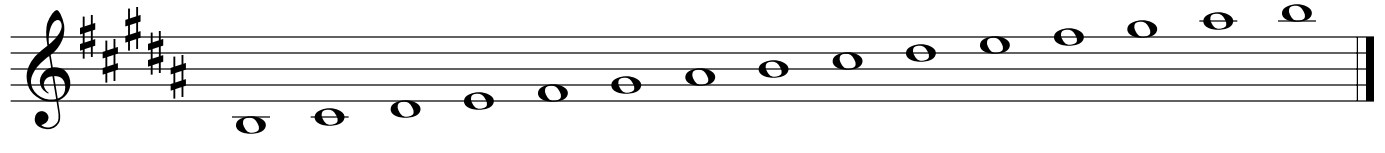
A musical staff in treble clef with three sharps (F#, C#, G#) in the key signature. It contains the A major scale: A, B, C#, D, E, F#, G#, A, B, C#, D, E, F#, G#, A.

E



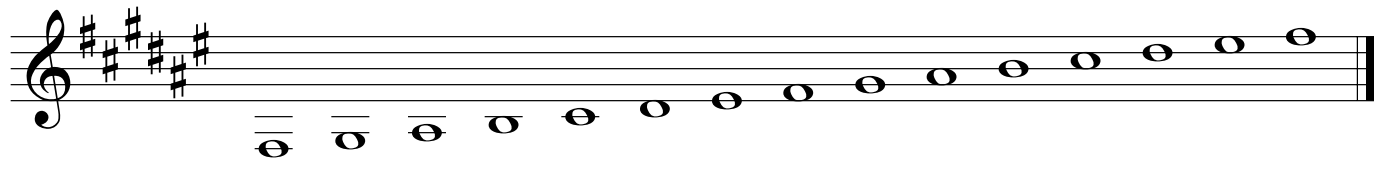
A musical staff in treble clef with four sharps (F#, C#, G#, D#) in the key signature. It contains the E major scale: E, F#, G#, A, B, C#, D#, E, F#, G#, A, B, C#, D#, E.

B



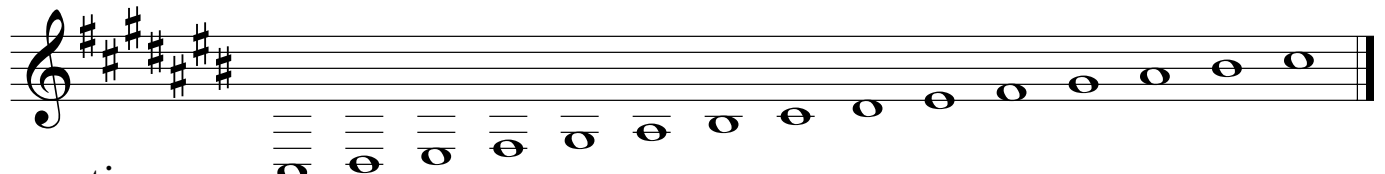
A musical staff in treble clef with five sharps (F#, C#, G#, D#, A#) in the key signature. It contains the B major scale: B, C#, D#, E, F#, G#, A#, B, C#, D#, E, F#, G#, A#, B.

F#



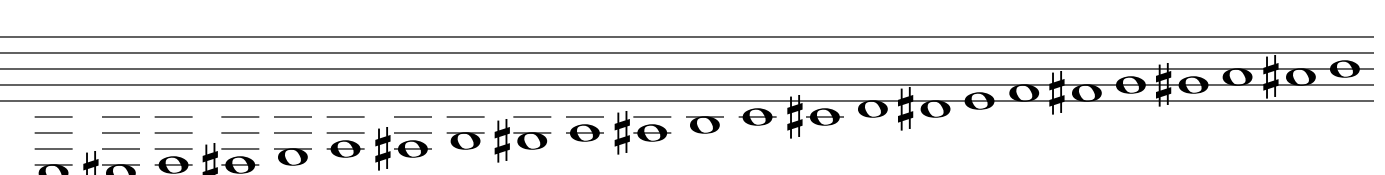
A musical staff in treble clef with six sharps (F#, C#, G#, D#, A#, E#) in the key signature. It contains the F# major scale: F#, G#, A#, B, C#, D#, E#, F#, G#, A#, B, C#, D#, E#, F#.

C#

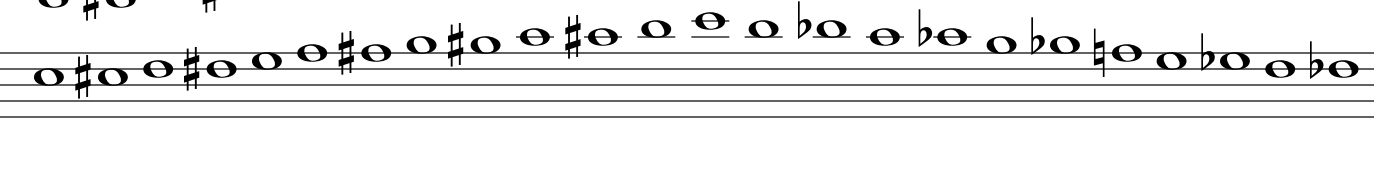


A musical staff in treble clef with seven sharps (F#, C#, G#, D#, A#, E#, B#) in the key signature. It contains the C# major scale: C#, D#, E#, F#, G#, A#, B#, C#, D#, E#, F#, G#, A#, B#, C#.

Chromatic



A musical staff in treble clef showing the chromatic scale ascending from G to G. The notes are: G, G#, A, A#, B, B#, C, C#, D, D#, E, E#, F, F#, G.



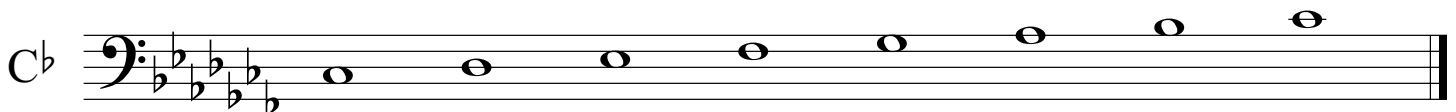
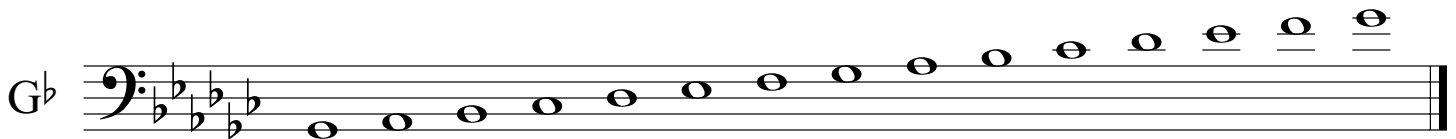
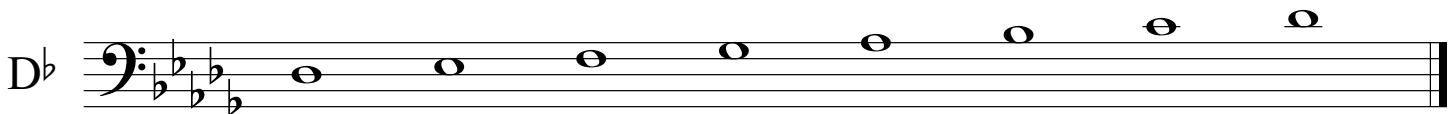
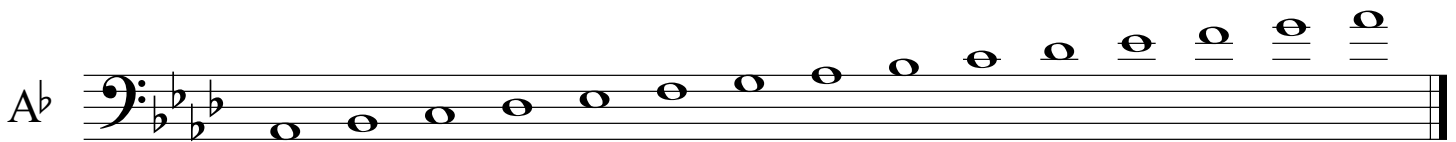
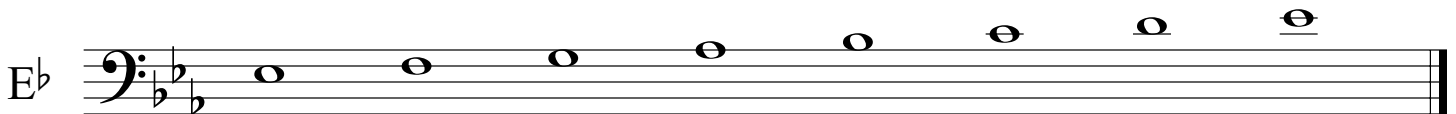
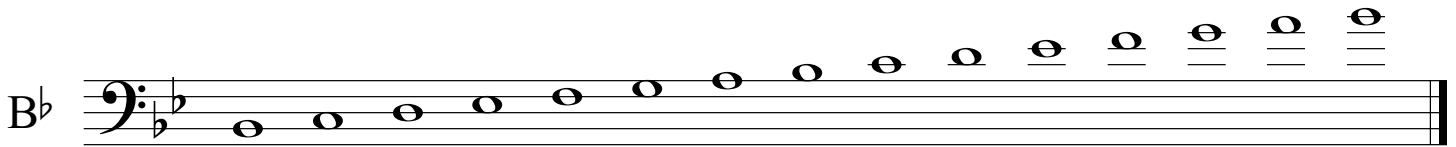
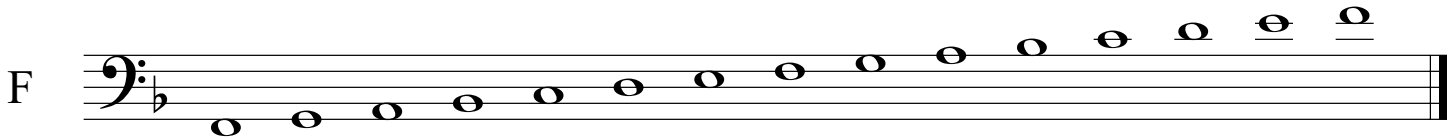
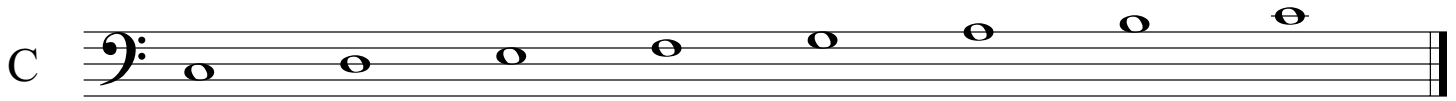
A musical staff in treble clef showing the chromatic scale descending from G to G. The notes are: G, F#, F, E#, E, D#, D, C#, C, B#, B, A#, A, G#.



A musical staff in treble clef showing the chromatic scale descending from G to G. The notes are: G, F#, F, E#, E, D#, D, C#, C, B#, B, A#, A, G#.

MAJOR SCALES I

Trombone
Baritone B.C.



MAJOR SCALES I

Tuba

C

A musical staff in bass clef showing the C major scale. The notes are C, D, E, F, G, A, B, and C, all marked with a fermata.

F

A musical staff in bass clef showing the F major scale. The notes are F, G, A, Bb, C, D, E, and F, all marked with a fermata.

Bb

A musical staff in bass clef showing the Bb major scale. The notes are Bb, C, D, E, F, G, A, and Bb, all marked with a fermata.

Eb

A musical staff in bass clef showing the Eb major scale. The notes are Eb, F, G, Ab, Bb, C, D, and Eb, all marked with a fermata.

Ab

A musical staff in bass clef showing the Ab major scale. The notes are Ab, Bb, C, D, Eb, F, G, and Ab, all marked with a fermata.

Db

A musical staff in bass clef showing the Db major scale. The notes are Db, Eb, F, G, Ab, Bb, C, and Db, all marked with a fermata.

Gb

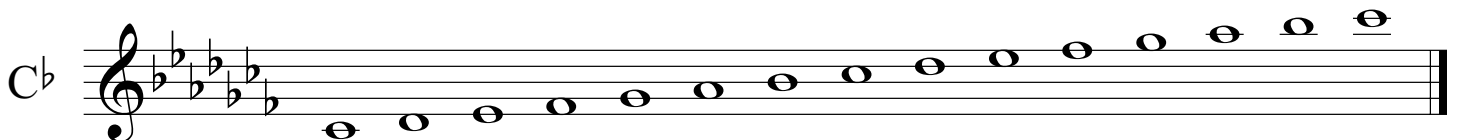
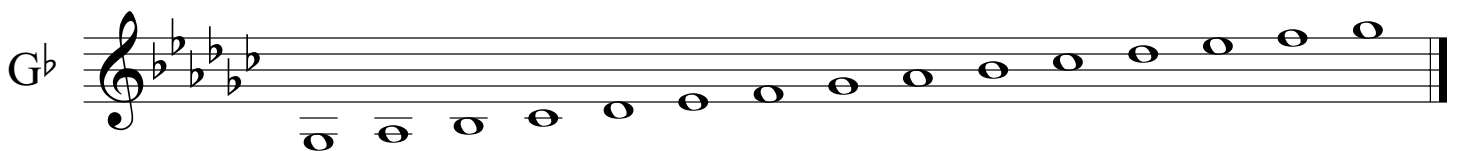
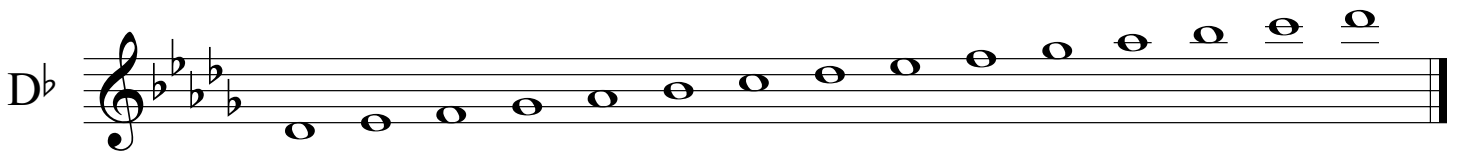
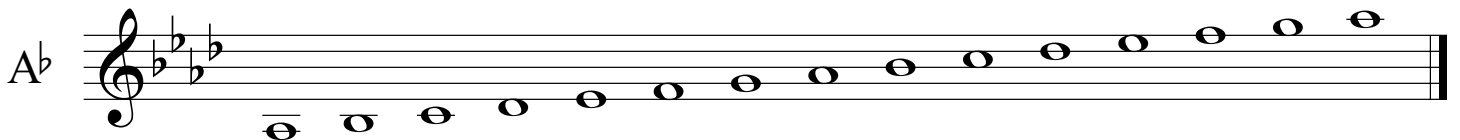
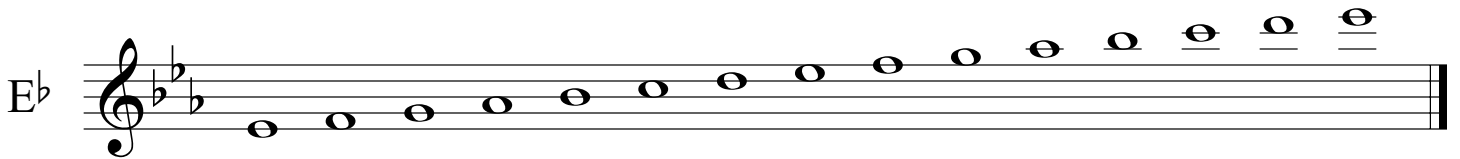
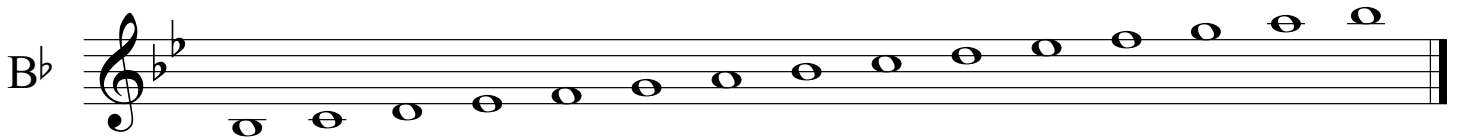
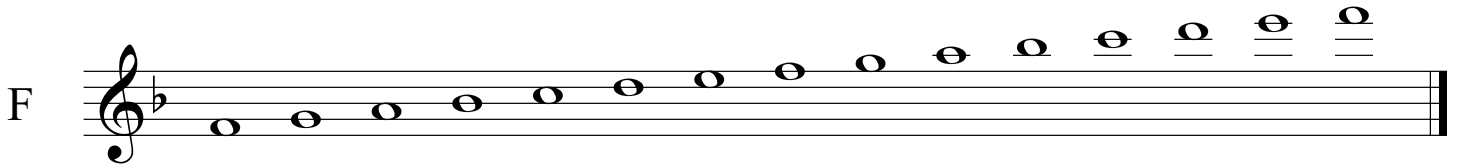
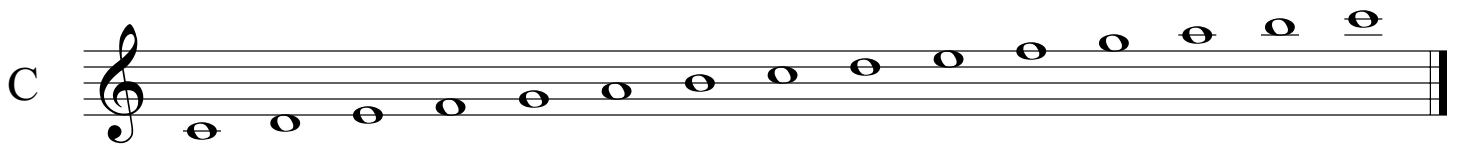
A musical staff in bass clef showing the Gb major scale. The notes are Gb, Ab, Bb, C, Db, Eb, F, and Gb, all marked with a fermata.

Cb

A musical staff in bass clef showing the Cb major scale. The notes are Cb, Db, Eb, F, Gb, Ab, Bb, and Cb, all marked with a fermata.

MAJOR SCALES I

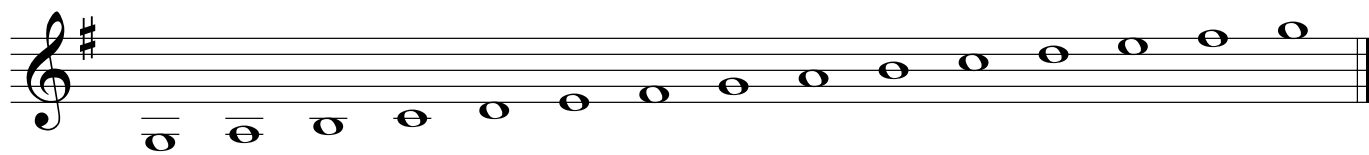
Mallets



MAJOR SCALES II

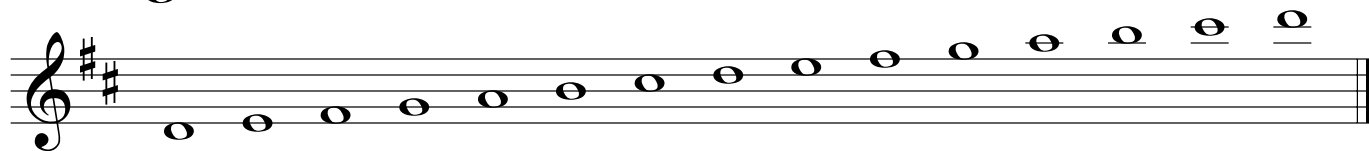
Mallets

G



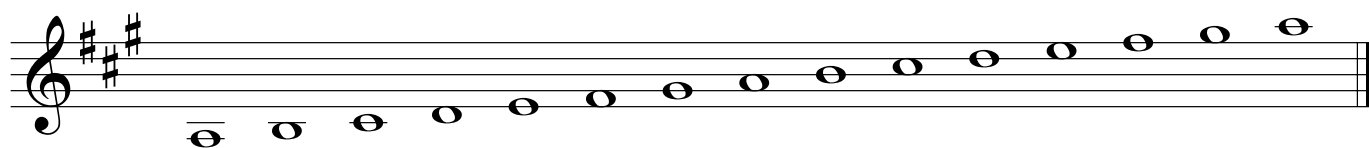
A musical staff in treble clef with one sharp (F#) in the key signature. The scale consists of eight quarter notes: G, A, B, C, D, E, F#, and G.

D



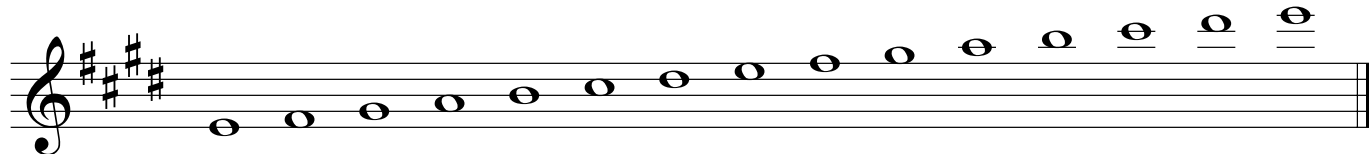
A musical staff in treble clef with two sharps (F# and C#) in the key signature. The scale consists of eight quarter notes: D, E, F#, G, A, B, C#, and D.

A



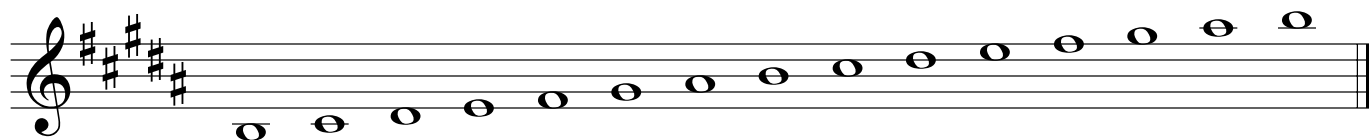
A musical staff in treble clef with three sharps (F#, C#, and G#) in the key signature. The scale consists of eight quarter notes: A, B, C#, D, E, F#, G#, and A.

E



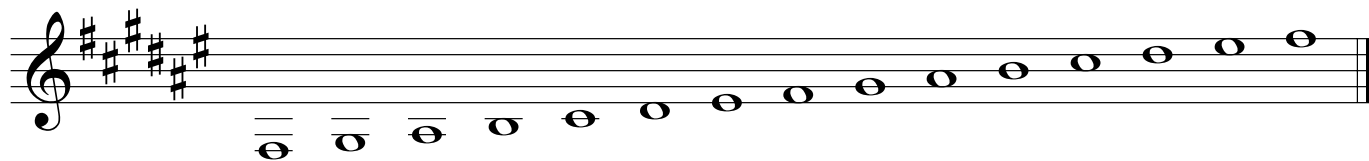
A musical staff in treble clef with four sharps (F#, C#, G#, and D#) in the key signature. The scale consists of eight quarter notes: E, F#, G#, A, B, C#, D#, and E.

B



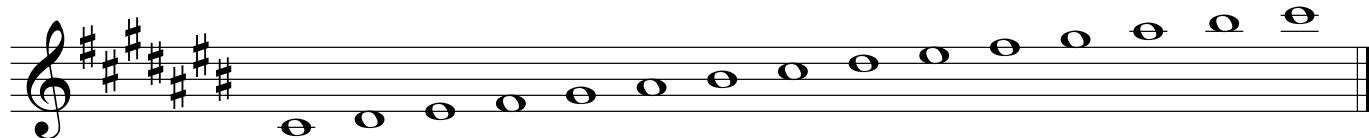
A musical staff in treble clef with five sharps (F#, C#, G#, D#, and A#) in the key signature. The scale consists of eight quarter notes: B, C#, D#, E, F#, G#, A#, and B.

F#



A musical staff in treble clef with six sharps (F#, C#, G#, D#, A#, and E#) in the key signature. The scale consists of eight quarter notes: F#, G#, A, B, C#, D, E, and F#.

C#

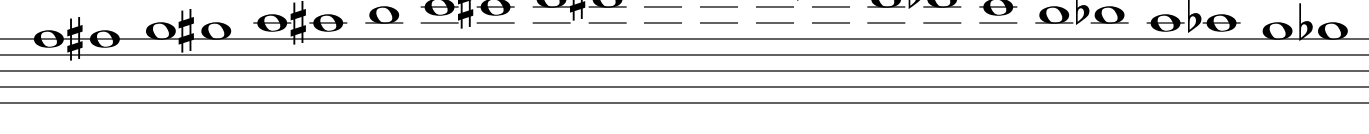


A musical staff in treble clef with seven sharps (F#, C#, G#, D#, A#, E#, and B#) in the key signature. The scale consists of eight quarter notes: C#, D, E, F#, G, A, B, and C#.

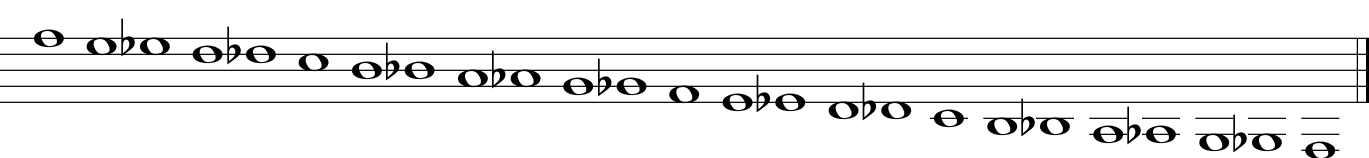
Chromatic



A musical staff in treble clef showing a chromatic scale ascending from G to G. The notes are: G, G#, A, A#, B, B#, C, C#, D, D#, E, E#, F, F#, G.



A musical staff in treble clef showing a chromatic scale descending from G to G. The notes are: G, F#, F, E#, E, D#, D, C#, C, B#, B, A#, A, G#.



A musical staff in treble clef showing a chromatic scale descending from G to G. The notes are: G, F, E, D, C, B, A, G, F, E, D, C, B, A, G.

MAJOR SCALES I

Violin

C

F

Bb

Eb

Ab

Db

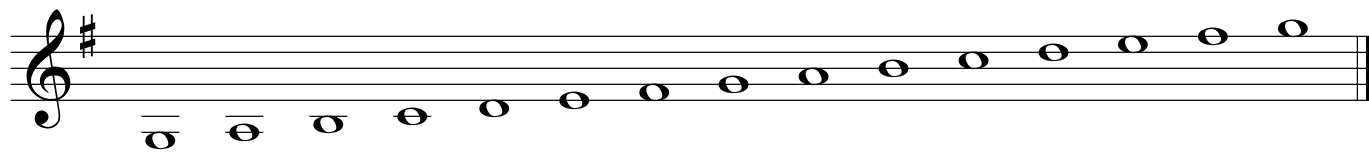
Gb

Cb

MAJOR SCALES II

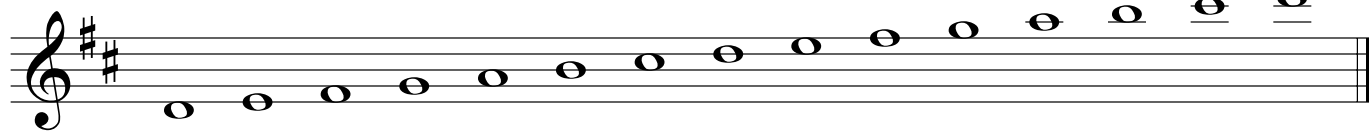
Violin

G



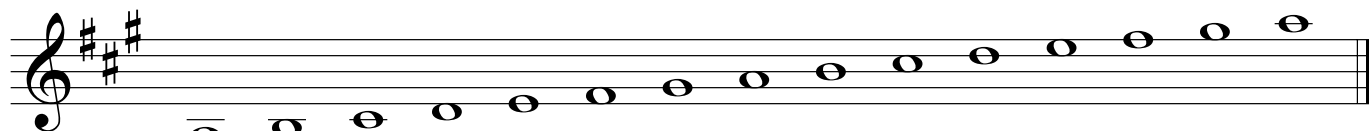
A single musical staff in treble clef with one sharp (F#) in the key signature. It contains the G major scale: G, A, B, C, D, E, F#, G.

D



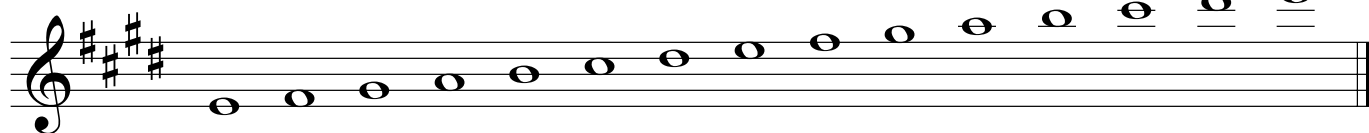
A single musical staff in treble clef with two sharps (F#, C#) in the key signature. It contains the D major scale: D, E, F#, G, A, B, C#, D.

A



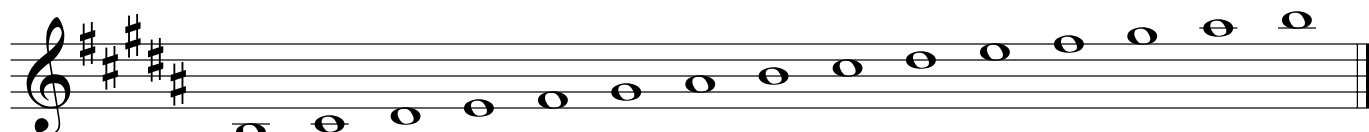
A single musical staff in treble clef with three sharps (F#, C#, G#) in the key signature. It contains the A major scale: A, B, C#, D, E, F#, G#, A.

E



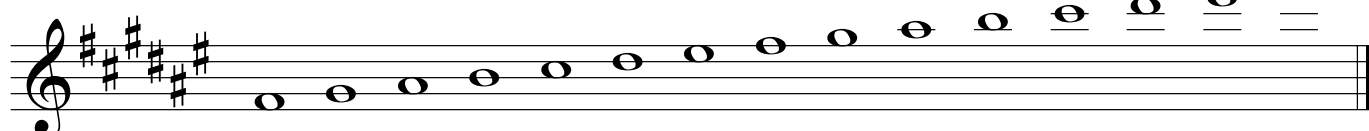
A single musical staff in treble clef with four sharps (F#, C#, G#, D#) in the key signature. It contains the E major scale: E, F#, G#, A, B, C#, D#, E.

B



A single musical staff in treble clef with five sharps (F#, C#, G#, D#, A#) in the key signature. It contains the B major scale: B, C#, D#, E, F#, G#, A#, B.

F#



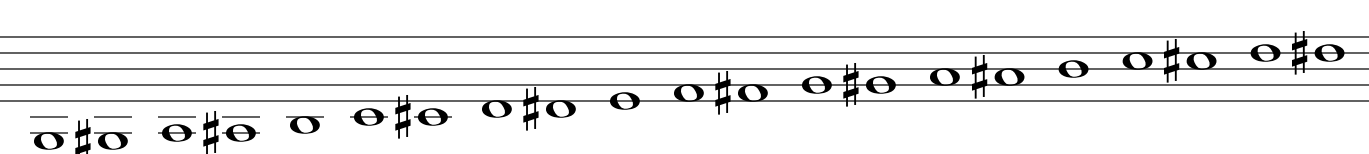
A single musical staff in treble clef with six sharps (F#, C#, G#, D#, A#, E#) in the key signature. It contains the F# major scale: F#, G#, A#, B, C#, D#, E#, F#.

C#



A single musical staff in treble clef with seven sharps (F#, C#, G#, D#, A#, E#, B#) in the key signature. It contains the C# major scale: C#, D#, E#, F#, G#, A#, B#, C#.

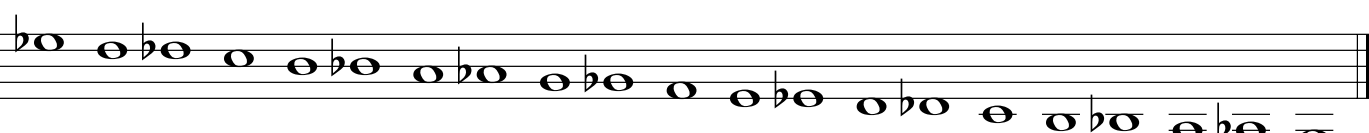
Chromatic



A single musical staff in treble clef showing the ascending chromatic scale: C, C#, D, D#, E, E#, F, F#, G, G#, A, A#, B, B#, C.



A single musical staff in treble clef showing the descending chromatic scale: C, B, Bb, Ab, G, F, Fb, Eb, D, C, Cb, Bb, Ab, G, F, Fb, Eb, D, C.

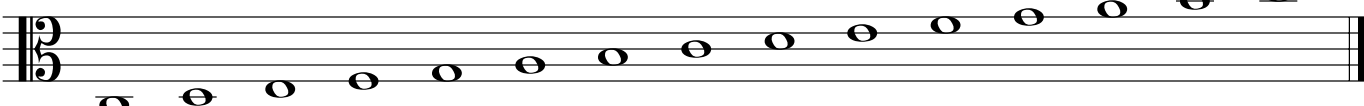


A single musical staff in treble clef showing the descending chromatic scale: C, B, Bb, Ab, G, F, Fb, Eb, D, C, Cb, Bb, Ab, G, F, Fb, Eb, D, C.


MAJOR SCALES I

Viola


C




F



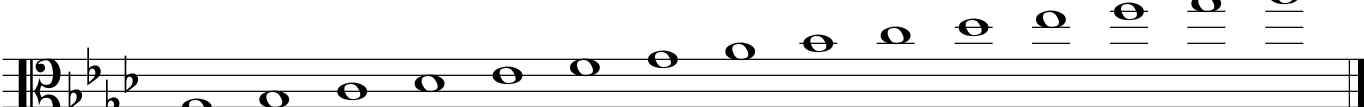
Bb



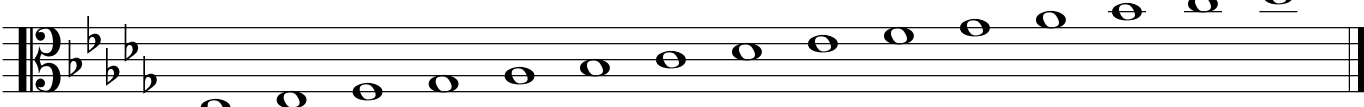
Eb




Ab



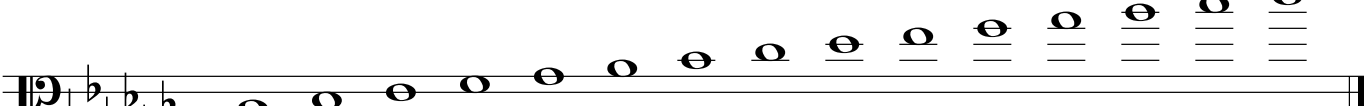
Db



Gb




Cb




MAJOR SCALES II

Viola


G




D




A




E




B



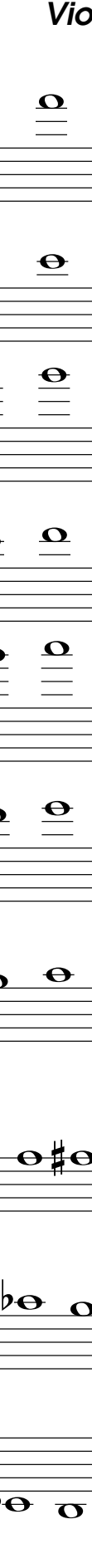
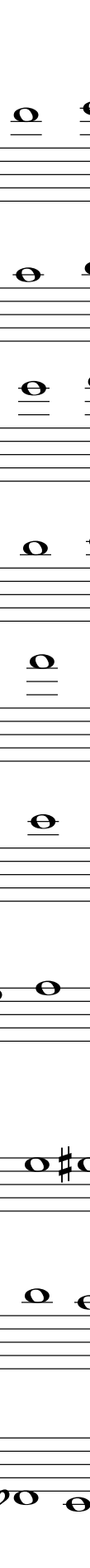
F#



C#



Chromatic



MAJOR SCALES I

Cello

C

A musical staff in bass clef showing the C major scale. The notes are C, D, E, F, G, A, B, C, starting on the second line and ending on the second space.

F

A musical staff in bass clef with one flat (Bb) showing the F major scale. The notes are F, G, A, Bb, C, D, E, F, starting on the first space and ending on the first space.

Bb

A musical staff in bass clef with two flats (Bb, Eb) showing the Bb major scale. The notes are Bb, C, D, Eb, F, G, A, Bb, starting on the first space and ending on the first space.

Eb

A musical staff in bass clef with three flats (Bb, Eb, Ab) showing the Eb major scale. The notes are Eb, F, G, Ab, Bb, C, D, Eb, starting on the first space and ending on the first space.

Ab

A musical staff in bass clef with four flats (Bb, Eb, Ab, Db) showing the Ab major scale. The notes are Ab, Bb, C, Db, Eb, F, G, Ab, starting on the first space and ending on the first space.

Db

A musical staff in bass clef with five flats (Bb, Eb, Ab, Db, Gb) showing the Db major scale. The notes are Db, Eb, F, Gb, Ab, Bb, C, Db, starting on the first space and ending on the first space.

Gb

A musical staff in bass clef with six flats (Bb, Eb, Ab, Db, Gb, Cb) showing the Gb major scale. The notes are Gb, Ab, Bb, Cb, Db, Eb, F, Gb, starting on the first space and ending on the first space.

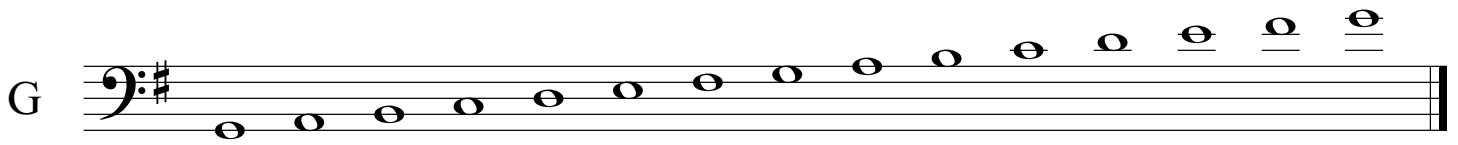
Cb

A musical staff in bass clef with seven flats (Bb, Eb, Ab, Db, Gb, Cb, Fb) showing the Cb major scale. The notes are Cb, Db, Eb, Fb, Gb, Ab, Bb, Cb, starting on the first space and ending on the first space.

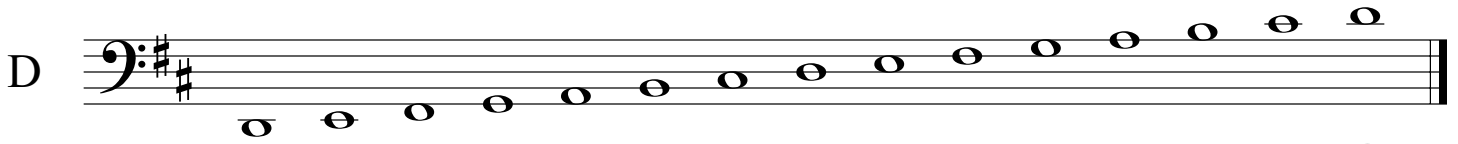
MAJOR SCALES II

Cello

G



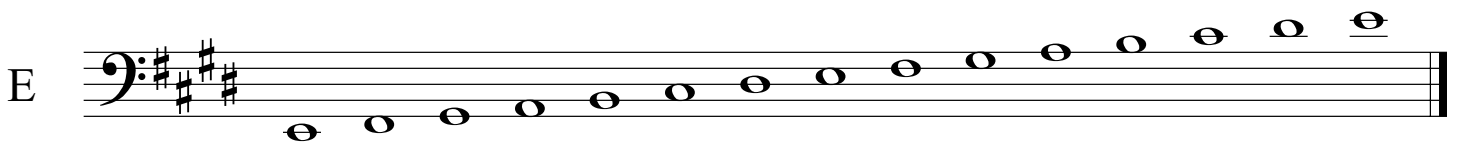
D



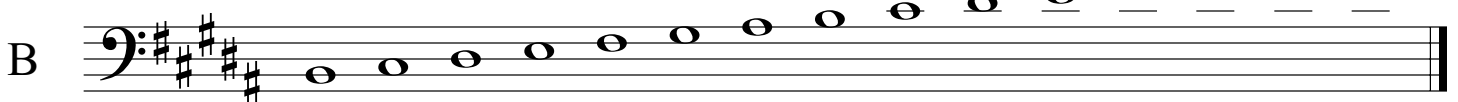
A



E



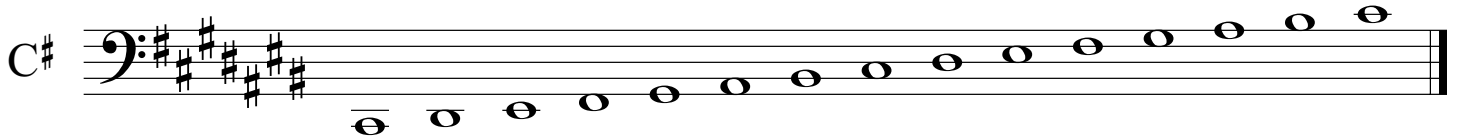
B



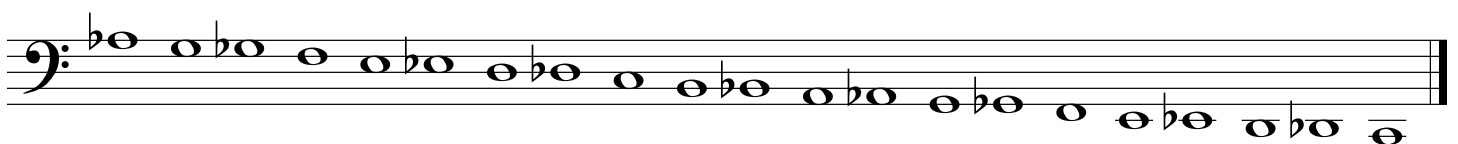
F#



C#



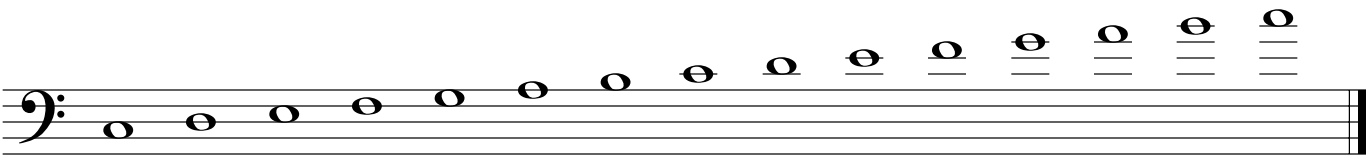
Chromatic



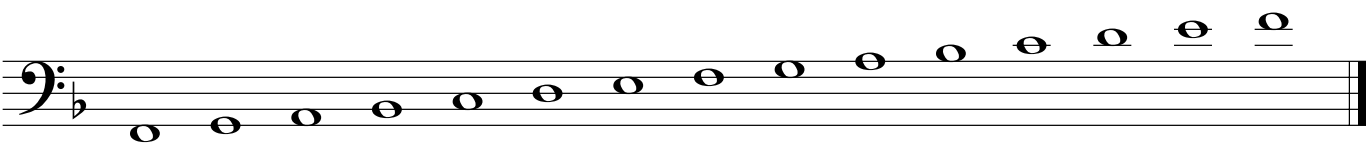
MAJOR SCALES I

Bass

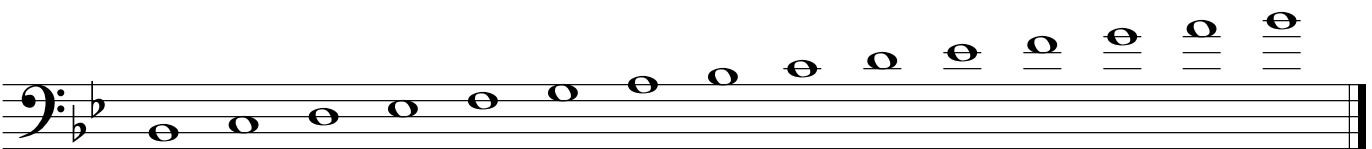
C



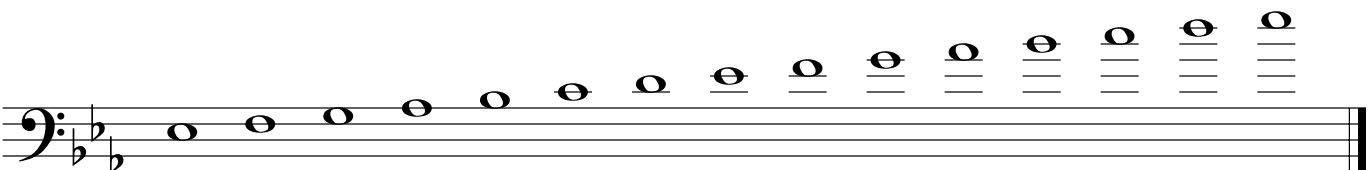
F



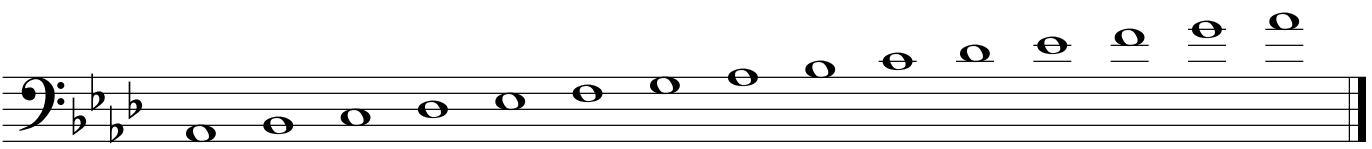
Bb



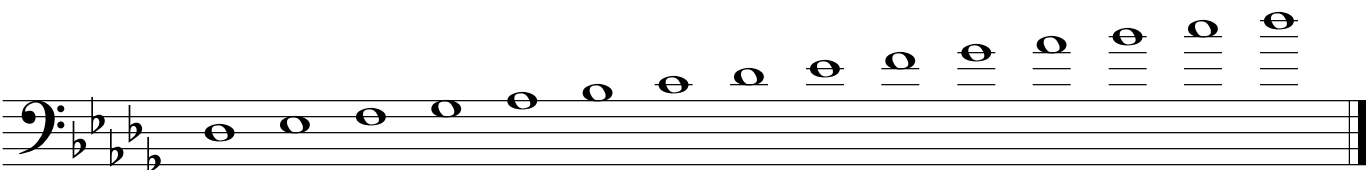
Eb



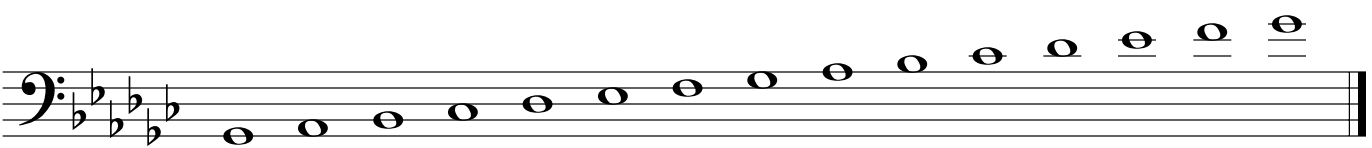
Ab



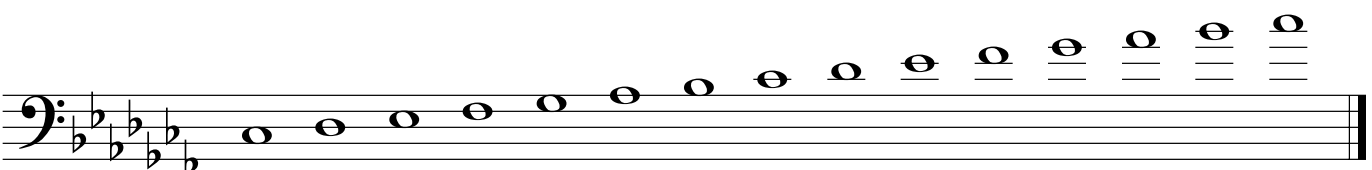
Db



Gb



Cb



MAJOR SCALES II

Bass

G

D

A

E

B

F#

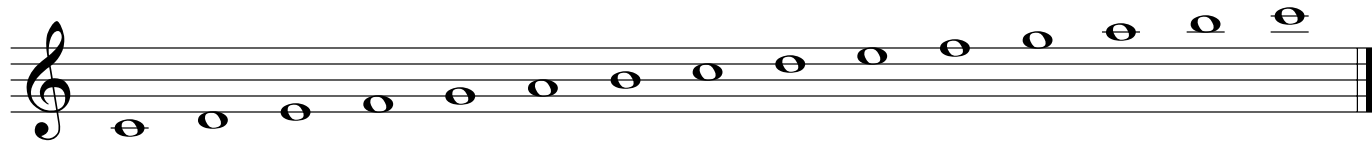
C#

Chromatic

MAJOR SCALES I

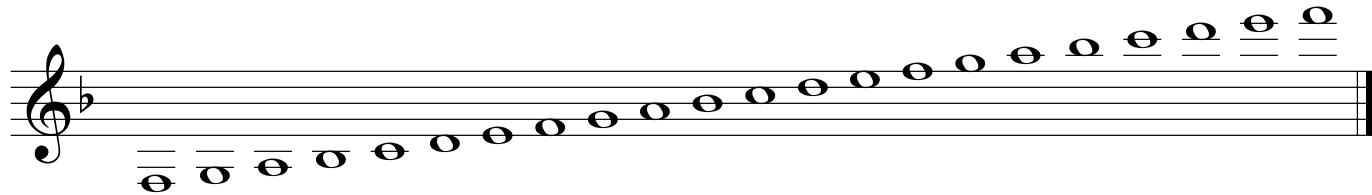
Guitar

C



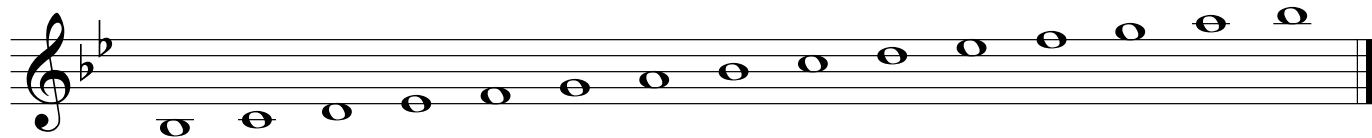
The C major scale is written on a single treble clef staff. It consists of eight quarter notes: C4 (one ledger line below), C4 (first line), D4 (second space), E4 (second space), F4 (third space), G4 (third space), A4 (fourth space), and B4 (fifth space). The notes are arranged in a straight line across the staff.

F



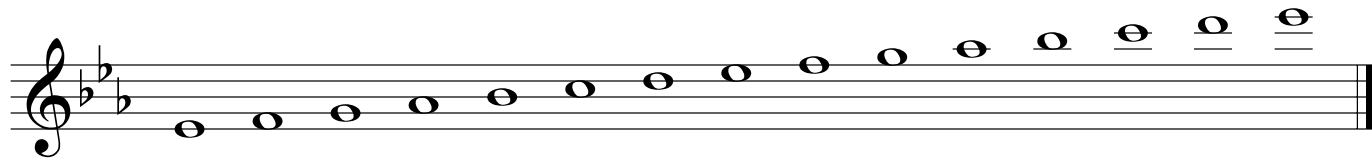
The F major scale is written on a single treble clef staff with one flat (Bb) in the key signature. It consists of eight quarter notes: F4 (first space), G4 (second space), A4 (second space), Bb4 (third space), C5 (third space), D5 (fourth space), E5 (fourth space), and F5 (fifth space). The notes are arranged in a line that slopes upward from left to right.

Bb



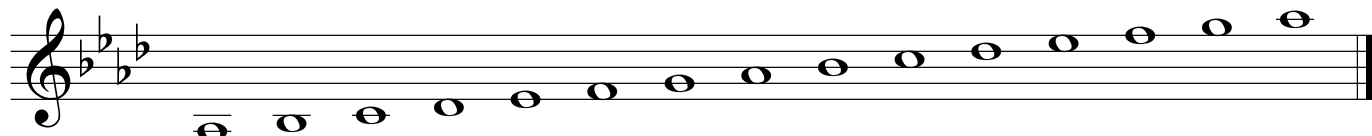
The Bb major scale is written on a single treble clef staff with two flats (Bb, Eb) in the key signature. It consists of eight quarter notes: Bb4 (third space), C5 (third space), D5 (fourth space), Eb5 (fourth space), F5 (fifth space), G5 (fifth space), Ab5 (first ledger line above), and Bb5 (first ledger line above). The notes are arranged in a line that slopes upward from left to right.

Eb



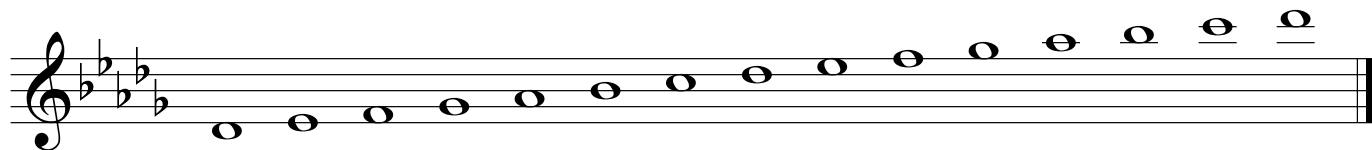
The Eb major scale is written on a single treble clef staff with three flats (Bb, Eb, Ab) in the key signature. It consists of eight quarter notes: Eb4 (third space), F5 (fifth space), G5 (fifth space), Ab5 (first ledger line above), Bb5 (first ledger line above), C6 (second ledger line above), D6 (second ledger line above), and Eb6 (second ledger line above). The notes are arranged in a line that slopes upward from left to right.

Ab



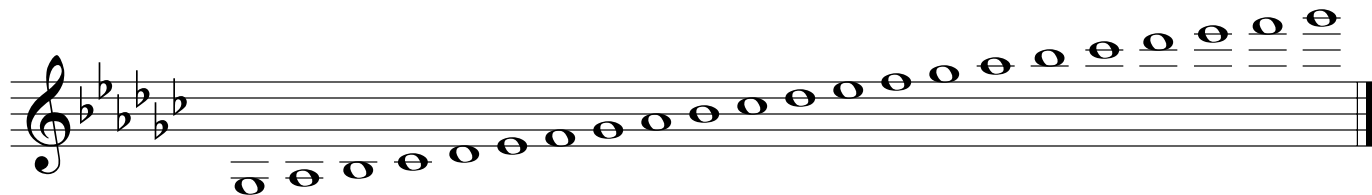
The Ab major scale is written on a single treble clef staff with four flats (Bb, Eb, Ab, Db) in the key signature. It consists of eight quarter notes: Ab4 (third space), Bb5 (first ledger line above), C6 (second ledger line above), Db6 (second ledger line above), Eb6 (second ledger line above), F6 (second ledger line above), G6 (second ledger line above), and Ab6 (second ledger line above). The notes are arranged in a line that slopes upward from left to right.

Db



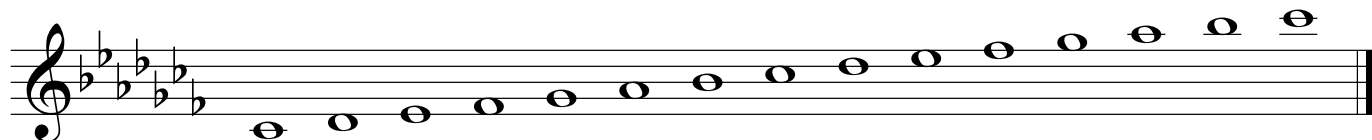
The Db major scale is written on a single treble clef staff with five flats (Bb, Eb, Ab, Db, Gb) in the key signature. It consists of eight quarter notes: Db4 (third space), Eb5 (fourth space), F6 (second ledger line above), Gb6 (second ledger line above), Ab6 (second ledger line above), Bb6 (second ledger line above), C7 (third ledger line above), and Db7 (third ledger line above). The notes are arranged in a line that slopes upward from left to right.

Gb



The Gb major scale is written on a single treble clef staff with six flats (Bb, Eb, Ab, Db, Gb, Cb) in the key signature. It consists of eight quarter notes: Gb4 (third space), Ab5 (fourth space), Bb6 (second ledger line above), Cb7 (third ledger line above), Db7 (third ledger line above), Eb7 (third ledger line above), Fb7 (third ledger line above), and Gb7 (third ledger line above). The notes are arranged in a line that slopes upward from left to right.

Cb



The Cb major scale is written on a single treble clef staff with seven flats (Bb, Eb, Ab, Db, Gb, Cb, Fb) in the key signature. It consists of eight quarter notes: Cb4 (first ledger line below), Db5 (third space), Eb6 (second ledger line above), Fb7 (third ledger line above), Gb7 (third ledger line above), Ab7 (third ledger line above), Bb7 (third ledger line above), and Cb8 (third ledger line above). The notes are arranged in a line that slopes upward from left to right.

MAJOR SCALES II

Guitar

G

D

A

E

B

F#

C#

Chromatic