

These materials may be used for classroom instruction but may not be reproduced in any form for any type of publication without permission from Blocki Flute Method LLC. All examples are taken from *Blocki Flute Method Book 1* by Kathy Blocki copyrights 1999 and 2009 all rights reserved. Additional exercises are available at www.blockiflute.com.

Head Joint Rhythms

page 7



A Quarter Note = One Beat



A Half Note = Two Beats

1

2

Lines 1 & 2 and 3 & 4 can be played together as duets.

3

4

Lines 5 and 6 can be played as together as a duet.

5

6

- 1) Play with the end of the head joint open
- 2) Play with the end of the head joint closed. (low and high notes)
- 3) Play half notes with the head joint open and quarter notes with the head joint closed

To play the top note, leave the end of the head joint uncovered.

To play the middle note, put your right hand pointer finger in the open end of the head joint to your first knuckle.

To play the lowest note, put your right hand pointer finger in the open end of the head joint to your second knuckle.

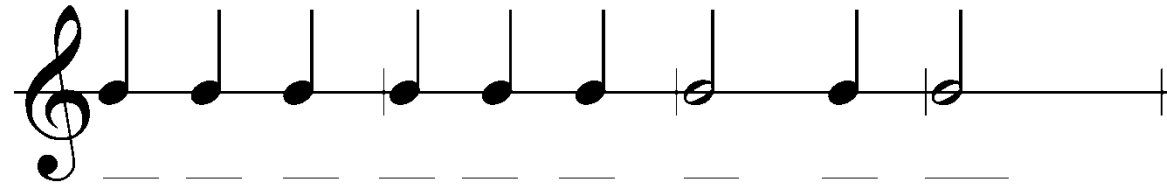
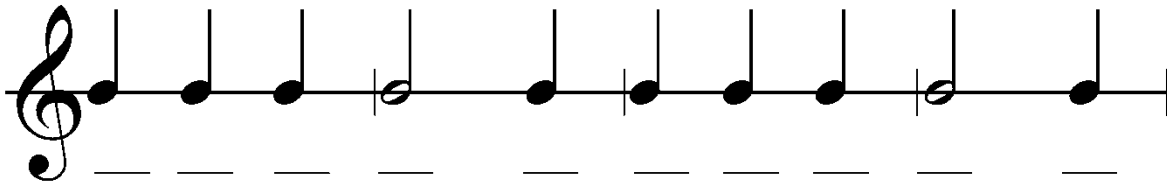
Mary Had A Little Lamb

Head Joint Challenge!

The above exercise should be played with the end of the head joint covered. The air should be directed downward to the lowest fan of the Pneumo Pro for the lowest note. To play the high note, move the lips forward with a lip opening of half the size of the low note. Moving the lips forward should cause the air to rise to the second wheel of the Pneumo Pro.

Title

Composer



Like Mary Had a Little Lamb as shown above, students should use their index fingers to produce a High, Middle and Low pitch on the head joint. To write this student composition, have the students write H for the high note, M for the middle note and L to indicate a low note.

Taken from Blocki Flute Method Book I

Copyright 1999 by Blocki Pedagogical Flute Products

www.blockiflute.com