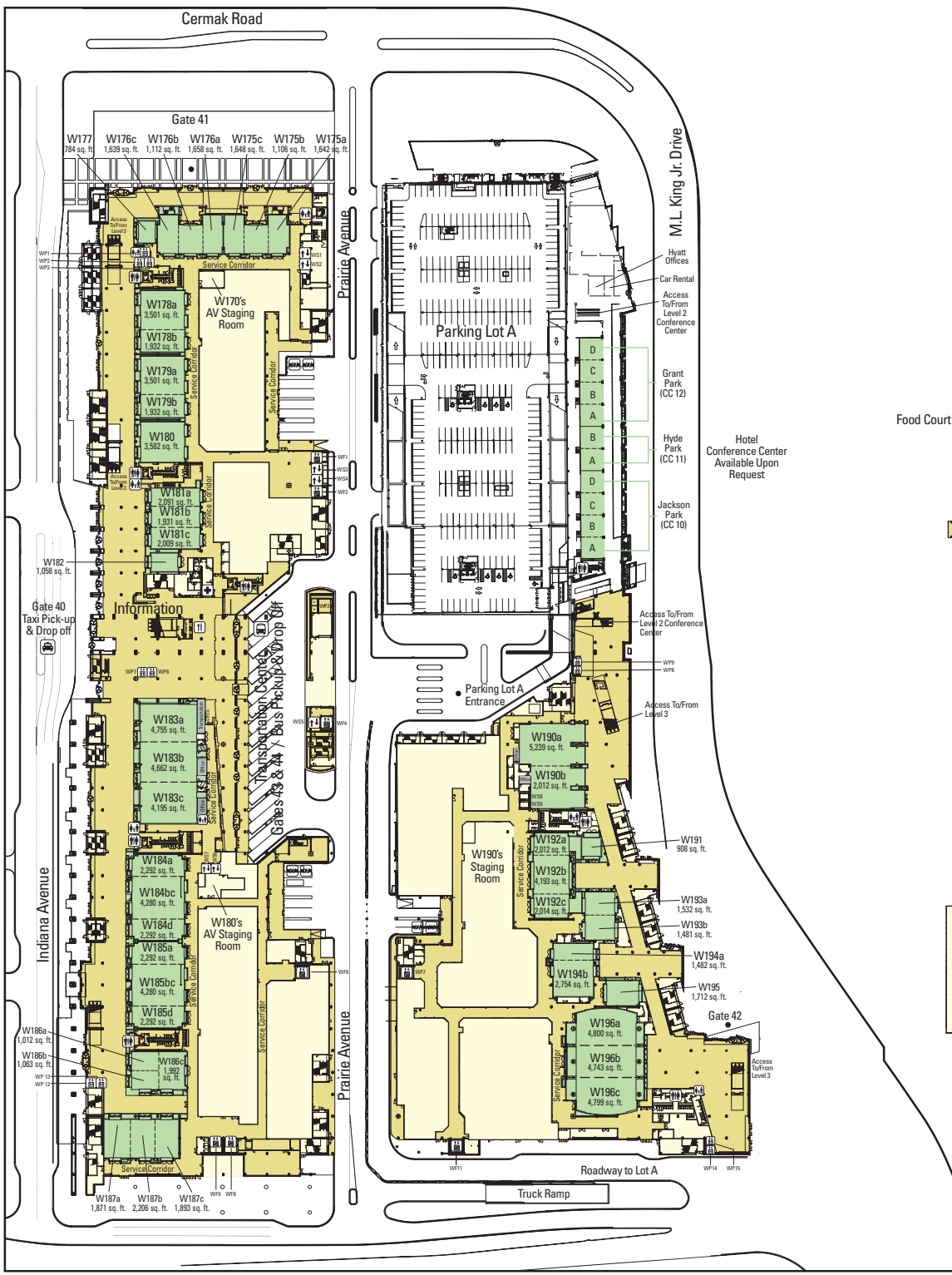
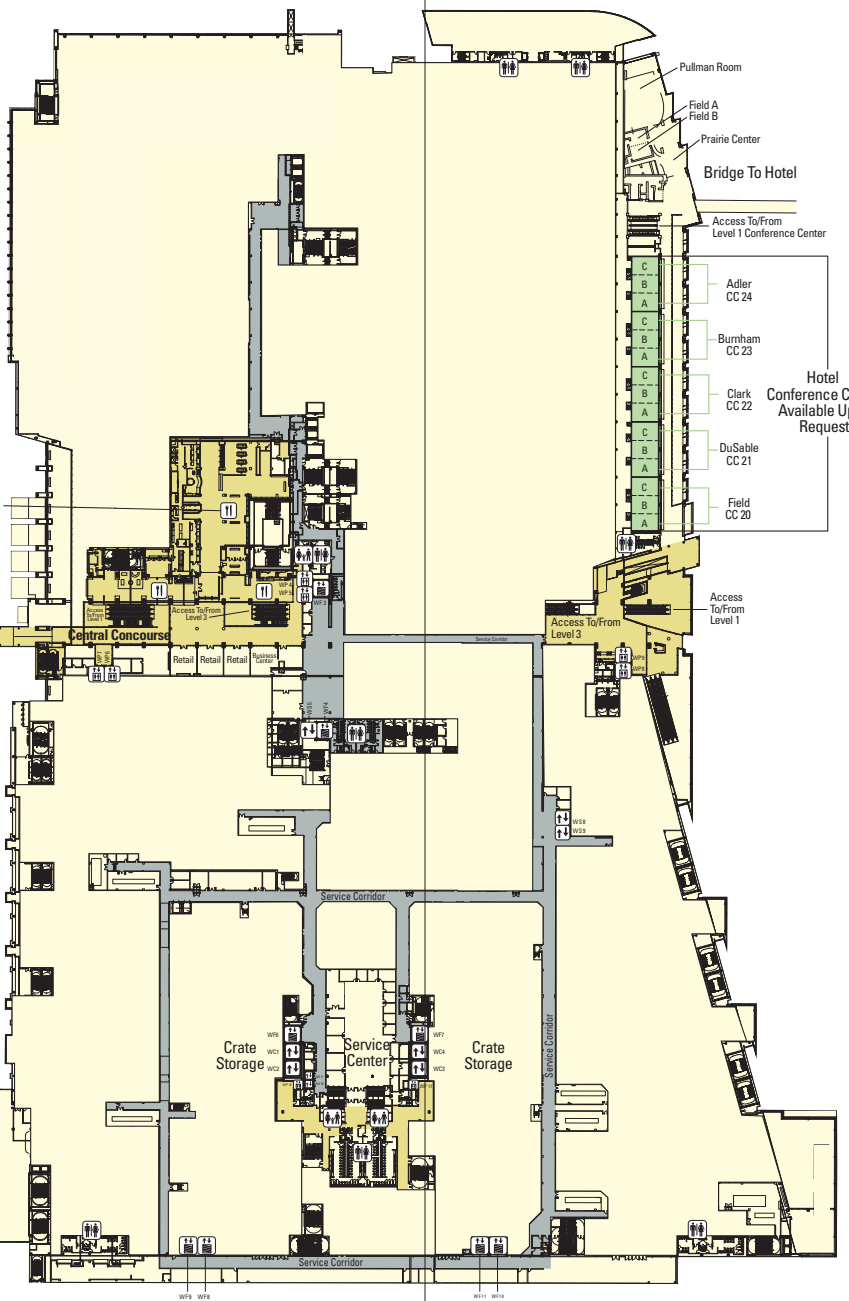


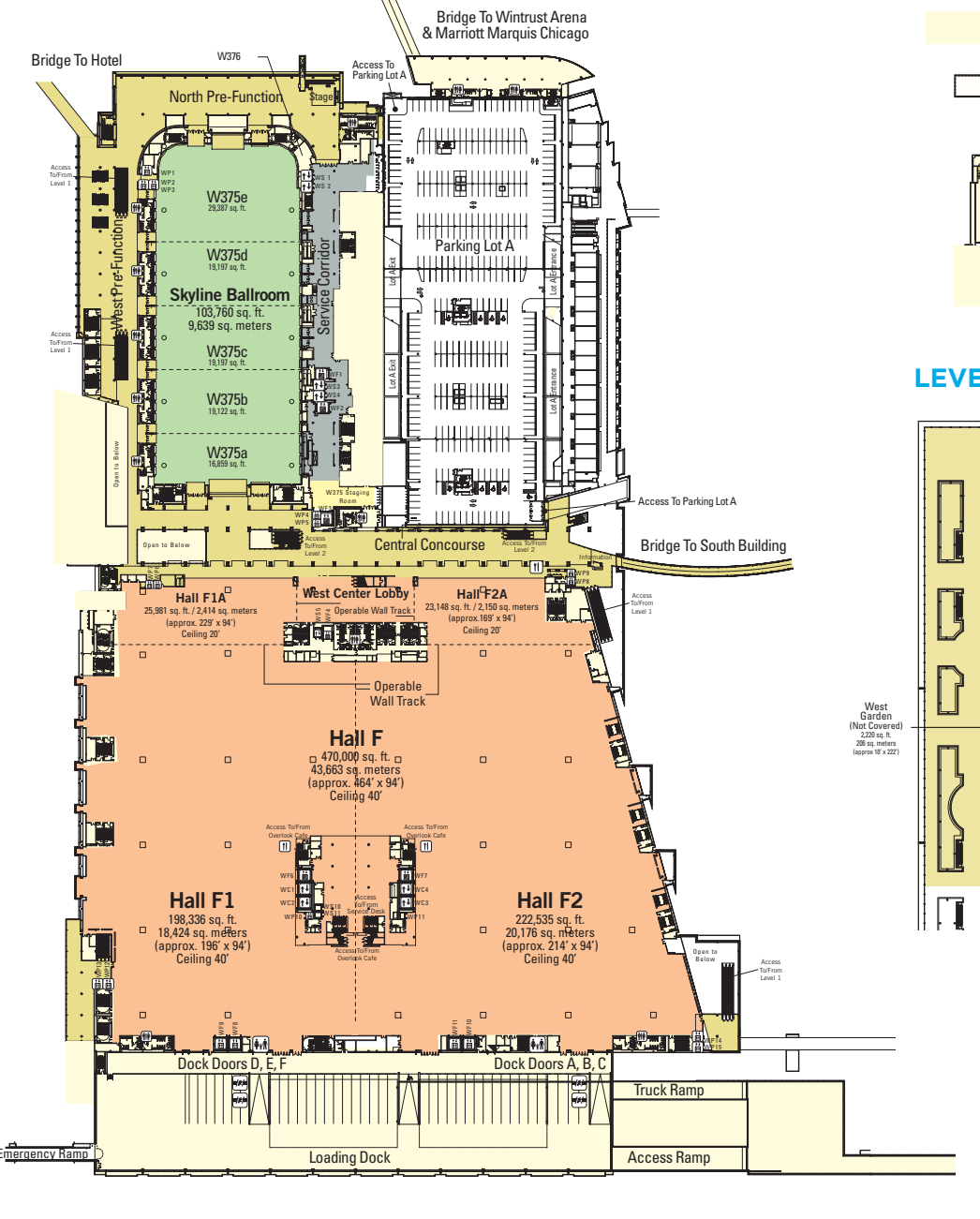
LEVEL 1



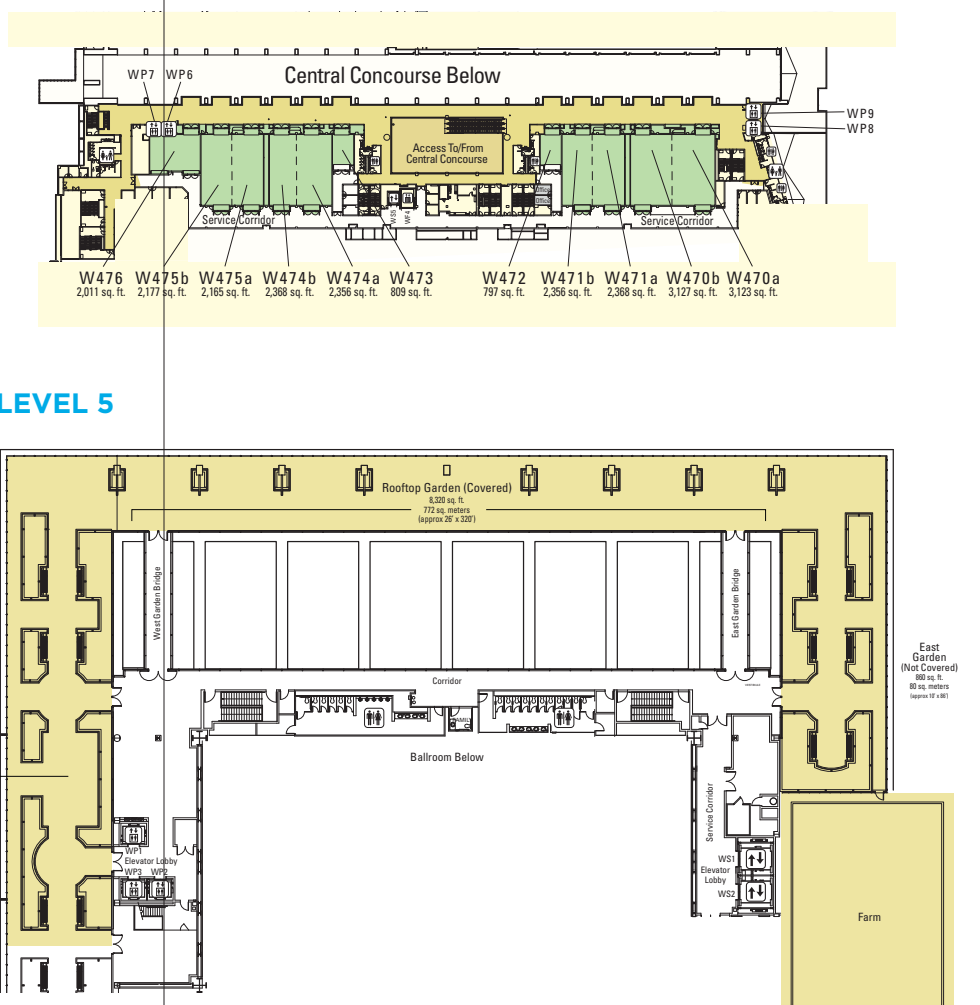
LEVEL 2



LEVEL 3



LEVEL 4



Room	Sq. Ft.	Dimensions	Ceiling Height	Theater	School Room	Banquet
W175	4,396	*	20' 0"	440	213	230
W175a	1,642	31' 6" x 56' 3"	20' 0"	173	84	90
W175b	1,106	26' x 44'	20' 0"	101	48	50
W175c	1,648	32' 7" x 56' 3"	20' 0"	166	81	90
W176	4,409	*	20' 0"	438	213	230
W176a	1,658	32' 2" x 56' 3"	20' 0"	167	81	90
W176b	1,112	26' 2" x 44'	20' 0"	100	48	50
W176c	1,639	31' 5" x 56' 3"	20' 0"	171	84	90
W177	784	27' 4" x 30'	16' 2"	71	36	40
W178	5,433	84' x 64' 4"	20' 0"	504	252	280
W178a	3,501	54' x 64' 4"	20' 0"	324	162	180
W178b	1,932	30' x 64' 4"	20' 0"	180	90	100
W179	5,433	84' x 64' 4"	20' 0"	504	252	280
W179a	3,501	54' x 64' 4"	20' 0"	324	162	180
W179b	1,932	30' x 64' 4"	20' 0"	180	90	100
W180	3,582	55' 4" x 67' 10"	20' 0"	337	168	180
W181	6,031	83' 4" x 74' 6"	20' 0"	554	273	300
W181a	2,091	28' 2" x 76' 6"	20' 0"	189	93	100
W181b	1,931	27' x 74' 6"	20' 0"	179	87	100
W181c	2,009	28' 2" x 74' 6"	20' 0"	186	93	100
W182	1,058	25' 6" x 37' 2"	16' 2"	92	45	50
W183	13,612	163' x 78'	26' 1"	1,272	630	700
W183a	4,755	58' 8" x 78'	26' 1"	452	225	250
W183b	4,662	56' x 78'	26' 1"	431	213	240
W183c	4,195	50' x 78'	26' 1"	389	192	210
W184	8,864	118' x 79' 6"	20' 1"	843	414	460
W184a	2,292	30' 11" x 79' 6"	20' 1"	221	108	120
W184b-c	4,280	56' x 79' 6"	20' 1"	400	198	220
W184d	2,292	31' x 79' 6"	20' 1"	222	108	120
W185	8,864	118' x 79' 6"	20' 1"	838	414	460
W185a	2,292	30' 11" x 79' 6"	20' 1"	220	108	120
W185b-c	4,280	56' x 79' 6"	20' 1"	397	198	220
W185d	2,292	31' x 79' 6"	20' 1"	221	108	120
W186	4,067	73' 1" x 51' 8"	19' 10"	374	186	200
W186a	1,012	25' 11" x 37' 1"	19' 10"	94	48	50
W186b	1,063	29' 5" x 37' 1"	19' 10"	94	48	50
W186c	1,992	36' x 51' 8"	19' 10"	186	90	100
W187	5,791	102' 7" x 53'	20' 1"	540	267	280
W187a	1,871	33' 1" x 53'	20' 1"	175	87	90
W187b	2,206	36' x 53'	20' 1"	189	93	100
W187c	1,893	33' 6" x 53'	20' 1"	176	87	90
W190	9,378	*	25' 10"	948	474	520
W190a	5,239	58' 5" x 97' 1"	25' 10"	522	261	290
W190b	4,139	58' 2" x 74' 1"	25' 10"	426	213	230
W191	908	36' 1" x 26' 6"	16' 2"	93	45	50

LEVEL 1 (CONT.)

Room	Sq. Ft.	Dimensions	Ceiling Height	Theater	School Room	Banquet
W192	6,961	*	20' 1"	688	333	360
W192a	2,012	31' 4" x 65' 4"	20' 1"	202	99	110
W192b	4,193	54' x 49' 4"	20' 1"	265	132	140
W192c	2,014	31' 4" x 66' 4"	20' 1"	210	102	110
W193	3,013	68' 11" x 48' 6"	20' 1"	268	129	140
W193a	1,532	33' 8" x 48' 6"	20' 1"	137	66	70
W193b	1,481	31' 2" x 48' 6"	20' 1"	131	63	70
W194	4,236	55' x 72' 7"	20' 0"	407	201	220
W194a	1,482	24' 9" x 55'	20' 0"	135	66	70
W194b	2,754	47' 10" x 55'	20' 0"	272	135	150
W195	1,712	34' 4" x 52' 1"	19' 1"	153	75	80
W196	14,342	146' 8" x 106' 5"	24' 10"	1,321	654	720
W196a	4,800	51' 3" x 106' 5"	24' 10"	424	210	230
W196b	4,743	44' x 106' 5"	24' 10"	473	234	260
W196c	4,799	51' 3" x 106' 5"	24' 10"	424	210	230

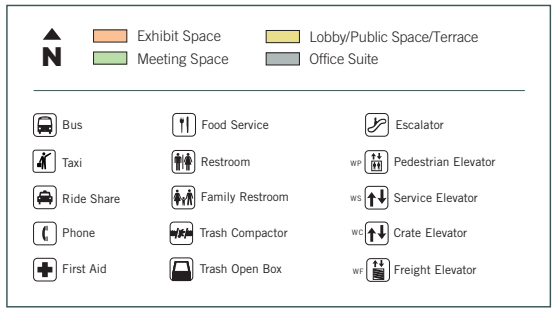
LEVEL 3

Room	Sq. Ft.	Dimensions	Ceiling Height	Theater	School Room	Banquet
W375/Skyline	103,760	481' x 208' 8"	Varies	10,000	5,001	5,550
W375a	16,859	72' 9" x 208' 8"	Varies	1,680	840	930
W375b	19,122	89' 8" x 208' 8"	Varies	1,768	844	980
W375c	19,197	90' x 208' 8"	39' 10"	1,768	844	980
W375d	19,197	90' x 208' 8"	39' 10"	1,768	844	980
W375e	29,387	138' 6" x 197' 3"	Varies	3,016	1,508	1,680

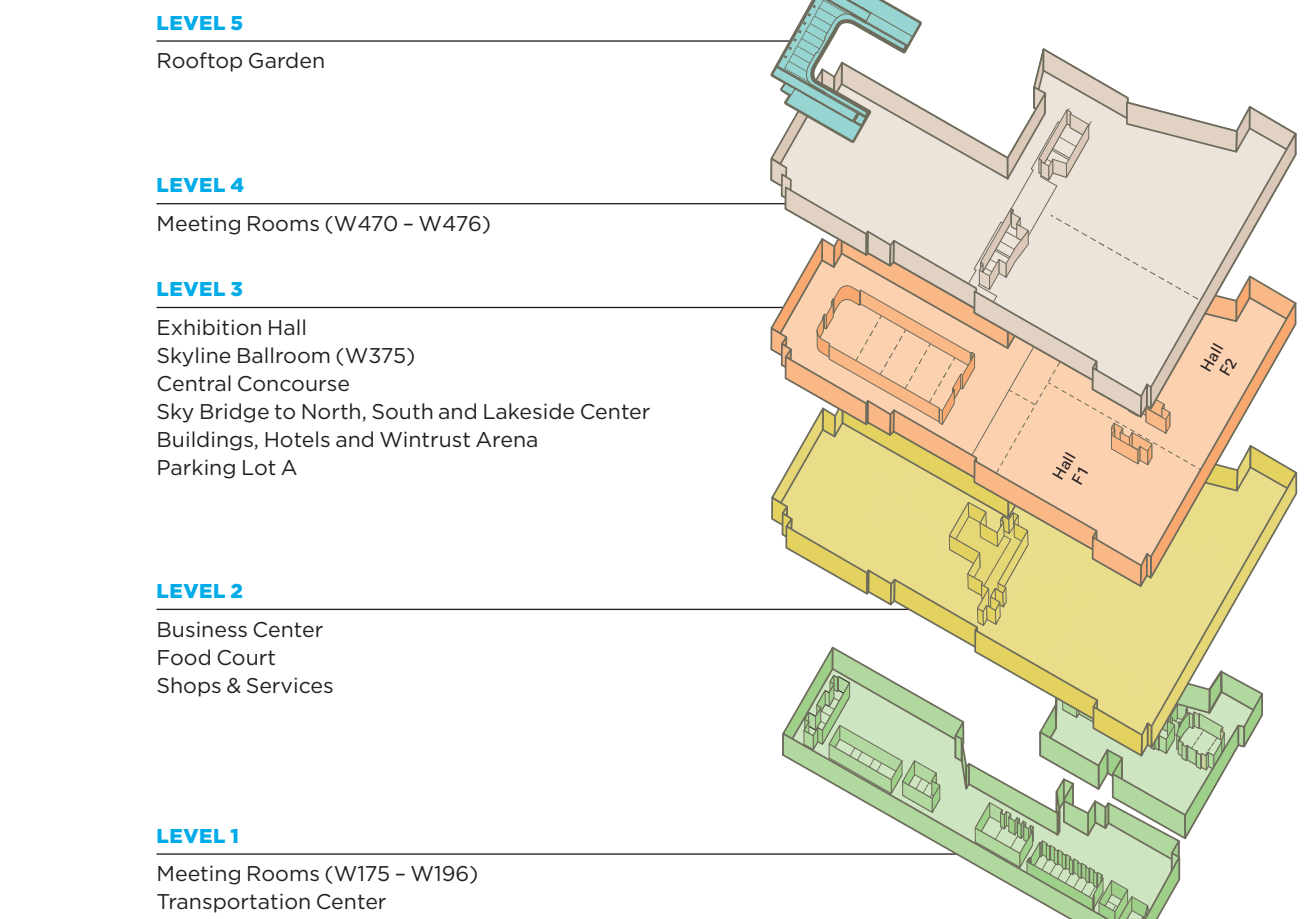
LEVEL 4

Room	Sq. Ft.	Dimensions	Ceiling Height	Theater	School Room	Banquet
W470	6,250	84' x 70' 6"	17' 2"	587	291	320
W470a	3,123	42' x 70' 6"	17' 2"	292	144	160
W470b	3,127	42' x 70' 6"	17' 2"	295	147	160
W471	4,724	62' 2" x 70' 6"	17' 0"	434	216	240
W471a	2,368	31' 2" x 70' 6"	17' 0"	217	108	120
W471b	2,356	31' x 70' 6"	17' 0"	217	108	120
W472	797	20' 10" x 41'	16' 3"	62	30	30
W473	809	21' 2" x 41'	16' 4"	75	36	40
W474	4,724	62' 2" x 70' 6"	16' 11"	434	216	240
W474a	2,356	31' x 70' 6"	16' 11"	219	108	120
W474b	2,368	31' 2" x 70' 6"	16' 11"	215	108	120
W475	4,712	62' x 70' 6"	17' 0"	433	216	240
W475a	2,165	31' 1" x 70' 6"	17' 0"	216	108	120
W475b	2,177	30' 11" x 70' 6"	17' 0"	217	108	120
W476	2,011	50' 2" x 36' 4"	17' 0"	182	90	100

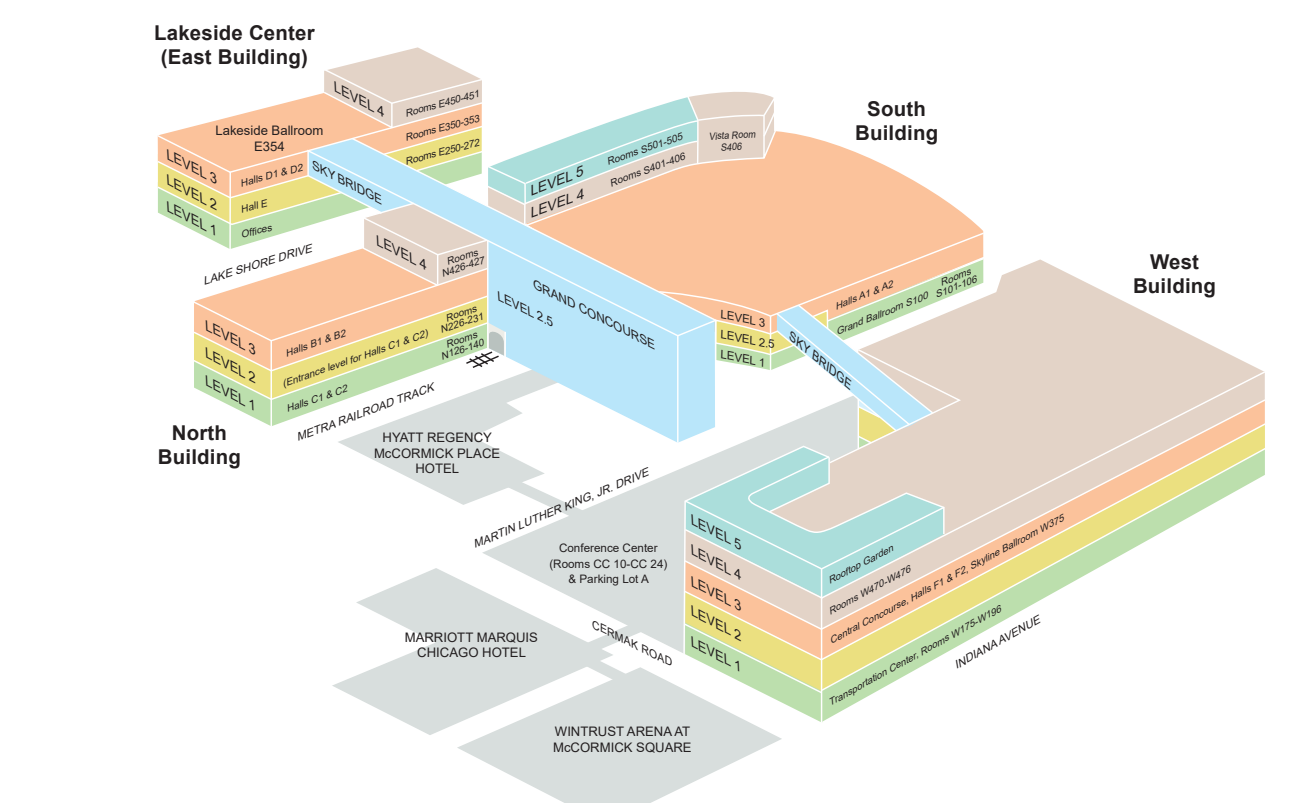
* Overall room dimensions are not given due to irregular shape of room. If a dais or any audiovisual equipment is added (e.g. screens, projectors) capacities will diminish. Due to the irregularities in the shape and layout of the space, multiplying dimensions may not equal square footage.



McCORMICK PLACE WEST SCHEMATIC



McCORMICK PLACE CAMPUS MAP



McCormick Place West

WEST BUILDING TECHNICAL SPECIFICATIONS

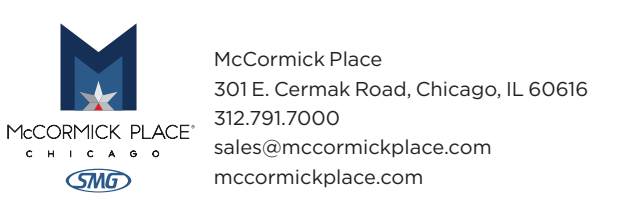
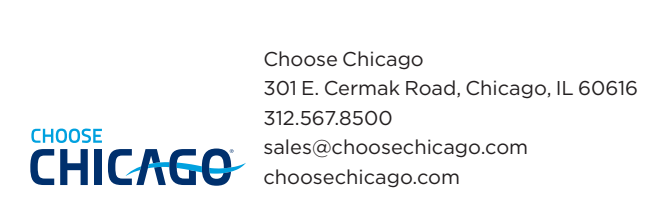
Exhibit Area	Total Area	
Hall F		
Hall F1	198,336 gross sq. feet	18,424 sq. meters
Hall F1A (low ceiling)	25,981 gross sq. feet	2,414 sq. meters
Hall F2	222,535 gross sq. feet	20,176 sq. meters
Hall F2A (low ceiling)	23,148 gross sq. feet	2,150 sq. meters
Hall F Combined	470,000 gross sq. feet	43,663 sq. meters
West Level 3 Center Lobby	10,613 gross sq. feet	985 sq. meters
Skyline Ballroom/W375		
W375A	16,859 gross sq. feet	1,565 sq. meters
W375B	19,122 gross sq. feet	1,776 sq. meters
W375C	19,197 gross sq. feet	1,783 sq. meters
W375D	19,197 gross sq. feet	1,783 sq. meters
W375E	29,387 gross sq. feet	2,730 sq. meters
W375 Combined	103,760 gross sq. feet	9,639 sq. meters
Crate Storage		
Hall F1	38,125 gross sq. feet	3,263 sq. meters
Hall F2	38,145 gross sq. feet	3,543 sq. meters
Combined	73,270 gross sq. feet	6,806 sq. meters
		Ceiling 13'
Exterior Crate Storage		
Hall F1	18,300 gross sq. feet	1,700 sq. meters
Hall F2	18,300 gross sq. feet	1,700 sq. meters
Combined	36,600 gross sq. feet	3,400 sq. meters
Interior/Exterior Combined		
	109,871 gross sq. feet	10,206 sq. meters
Floor Load/Finish		
Hall F	350# per sq. foot	Concrete
Skyline Ballroom/W375	250# per sq. foot	Carpet
Max. No. 10' x 10' Exhibit Booths (without special set-up)		
Hall F1	1,113	
Hall F2	1,250	
Hall F Combined	2,401	
Skyline Ballroom/W375	574	
Ceiling Heights		
Hall F1 & F2	40'	
F1A & F2A	20'	
Height beneath Food Pod	18'	
Skyline Ballroom/W375	40' at high point, 34' at low point	
Column Dimensions		
Hall F1 & F2	8' square enclosures at base, 5' 9" square cruciform above, columns 120' on center	
F1A & F2A	90' north/south x 120' east/west	
Skyline Ballroom/W375	6' round, 90' x 180' on center	
General Lighting		
Hall F1 & F2	Metal halide, 100' candles at 2' 6", room darkening curtains available	
Skyline Ballroom/W375	Metal halide, 50' candles at 2' 6", quartz incandescent, 30' candles at 2' 6", room darkening curtains available	
Freight Door Dimensions		
Hall F1	1 high-speed door 10' 0" wide x 10' 0" high	
	1 door 20' 0" wide x 15' 6" high	
	1 door 20' 0" wide x 20' 6" high	
Hall F2	1 high-speed door 10' 0" wide x 10' 0" high	
	1 door 20' 0" wide x 15' 6" high	
	1 door 20' 0" wide x 20' 6" high	
Skyline Ballroom/W375		
W375A	1 door 16' 0" wide x 12' 0" high	
W375B	1 door 10' 0" wide x 12' 0" high	
W375C	1 door 10' 0" wide x 12' 0" high	
W375D	1 door 10' 0" wide x 12' 0" high	
W375E	1 door 10' 0" wide x 12' 0" high	
Dock Positions		
Hall F1	13 berths (1 ramp direct to Exhibit Hall)	
Hall F2	20 berths (2 ramps direct to Exhibit Hall)	
Skyline Ballroom/W375	6 berths	

Trash Receptacles	
Level 1	2 compactors, 2 recycling
Level 3	2 open boxes, 2 compactors, 2 recycling
Utilities	
Hall F1 & F2	
	120 volt, 20 amp convenience outlets at perimeter walls
	120/208 volt, 3 phase, 30 amp convenience outlets at mega columns
Floor Ports 30 x 30 grid	120 volt 15 amp, 208 volt 1 and 3 phase 30 amp, 208 volt 1 and 3 phase 60 amp
	Empty cell for wiring as needed between floor ports
Overhead/Catwalk	120 volt 1 and 3 phase 30 amp, 120 volt 1 and 3 phase 800 amp Bus duct
	208 volt 1 and 3 phase 30 amp, 208 volt 1 and 3 phase 800 amp Bus duct
	277 volt 1 and 3 phase 800 amp Bus duct, 480 volt 1 and 3 phase 800 amp Bus duct
	Water 60 psi/ Air 100 psi/ Gas 1 lb./sq. in.
	Telephone/Audio/Video/Wi-Fi/CATV/Fiber Optic Cable
Skyline Ballroom/W375	
	120 volt 20 amp convenience outlets at perimeter walls
	120 volt 1 and 3 phase 30 amp convenience outlets at mega columns
	120 volt 1 and 3 phase 100 amp with cam loc connectors
	120 volt 3 phase 200 amp with cam loc connectors
	120 volt 3 phase 100 amp disconnect switch in service corridor
	208 volt 1 and 3 phase 30 amp convenience outlets at mega columns
	208 volt 1 and 3 phase 100 amp with cam loc connectors
	208 volt 1 and 3 phase 200 amp with cam loc connectors
	208 volt 3 phase 100 amp disconnect switch in service corridor
	277 volt 3 phase 100 amp disconnect switch in service corridor
	480 volt 3 phase 100 amp disconnect switch in service corridor
Floor Ports 15 x 30 grid	120 volt 15 amp, 120 volt 1 and 3 phase 60 amp, 208 volt 1 and 3 phase 60 amp
	Empty cell for wiring as needed between floor ports
Overhead/Catwalk	277 volt 1 and 3 phase 800 amp Bus duct, 480 volt 1 & 3 phase 800 amp Bus duct
	Telephone/Audio/Video/ Wi-Fi/CATV/Fiber Optic Cable
Internet Access	
CAT5 RJ45 connections over ethernet network, point-to-point networking at 10/100/1000 Mbps, Wi-Fi, fiber optic cable (where available).	
Ceiling Tracks	
Entrance of Hall F - F1A and F2A	
Skyline Ballroom/W375	
Show Management Offices	
Level 1 (inside W183)	Rooms: W183 office 1, office 2, office 3
Level 1 (adjacent to W190)	Rooms: W190 office 1, office 2, office 3
Business Center	
Level 2	Offers a full range of office supplies and business services. Mailboxes are located outside the Business Center.
Visitors' Information	
Level 1 West Concourse	Information/Facility and Destination
Level 1 East Concourse	Information/Facility
Level 3 Central Concourse	Information/Facility
Food Service	
Level 1	Beverage Service
Level 2	Food Court
Level 3	Beverage Service
Inside Hall F	Overlook Café
Building Entrances/Transportation	
Gate 40	Taxi loading/unloading, ride share
Gate 42	Charter buses
Gates 43 and 44 (Transportation Center)	Shuttle buses
METRA Train	South Building, Level 2.5
CTA City Buses	South and West Buildings
Other Services	
Level 1	Coat check located near Gates 43 and 44 (Transportation Center). First Aid, ATM
Level 2	Gift Shop, Shoe Shine
	AEDs on all levels



NOTES

Choose Chicago
301 E. Cermak Road, Chicago, IL 60616
312.567.8500
sales@choosechicago.com
choosechicago.com



TRANSPORTATION ENTRANCE GATES

- LAKESIDE CENTER**
- Gate 30**
Taxi Drop Off/Pick Up
Accessible Drop Off/Pick Up
- Gates 31-34**
Hotel Shuttle
- Gate 37**
Taxi Drop Off
Accessible Drop Off
- Gate 38**
Limo/Private Charter
Ride Share
- SOUTH BUILDING**
- Gates 1-3**
Hotel Shuttle
- Gate 4**
Taxi Drop Off/Pick Up
Accessible Drop Off/Pick Up
Ride Share
- Gate 25**
Accessible Drop Off
- Gate 26**
Private Charter
- Gate 27**
Limo
- NORTH BUILDING**
- Gates 20-21**
Hotel Shuttle/Limo/Private Charter
Accessible Drop Off/Pick Up
- Gate 22**
Taxi Drop Off/Pick Up
- WEST BUILDING**
- Gate 40**
Taxi Drop Off/Pick Up
Accessible Drop Off/Pick Up
Ride Share
- Gate 42**
Private Charter
Accessible Drop Off/Pick Up
- Gates 43-44**
Hotel Shuttle

McCORMICK PLACE WEST

Schematic and Planning Guide